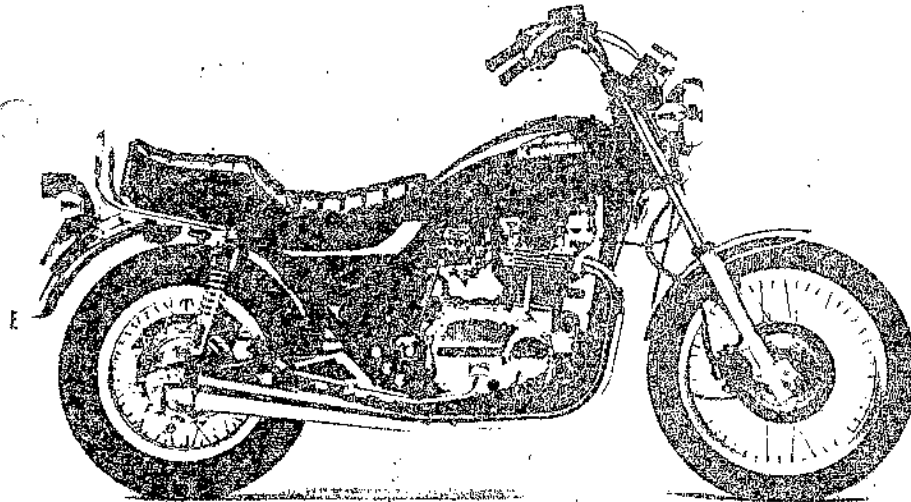
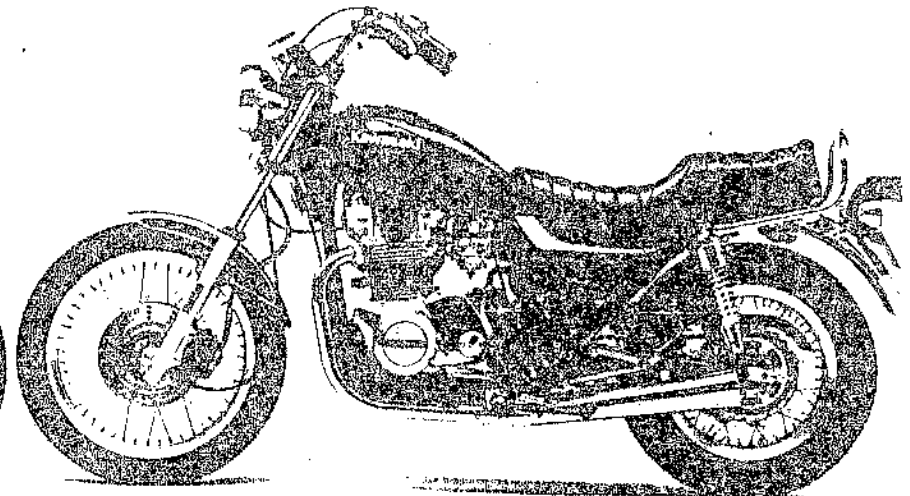


Z750-Y1

Right Side View



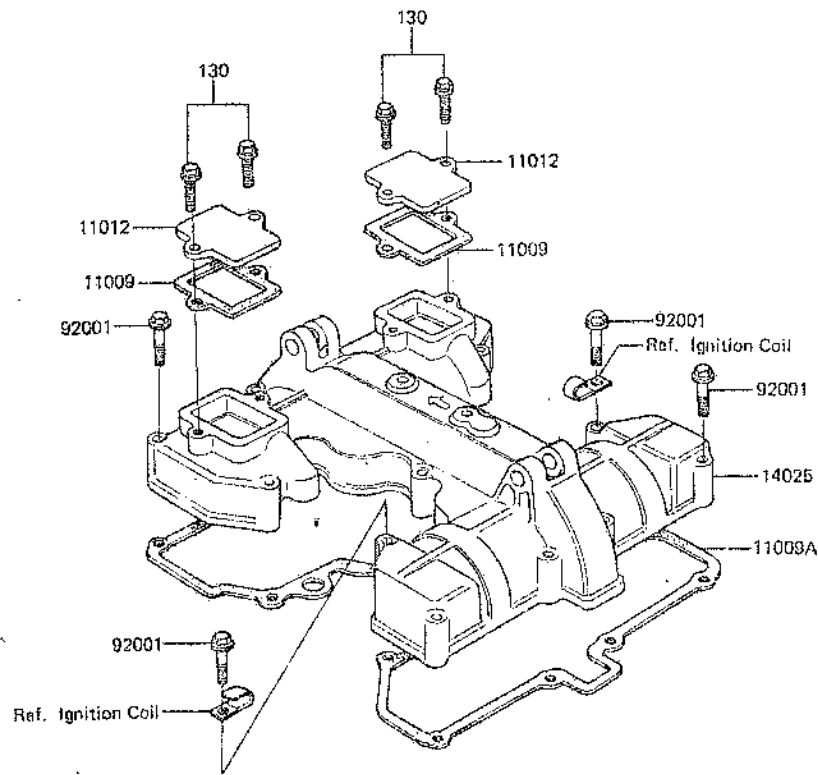
Left Side View



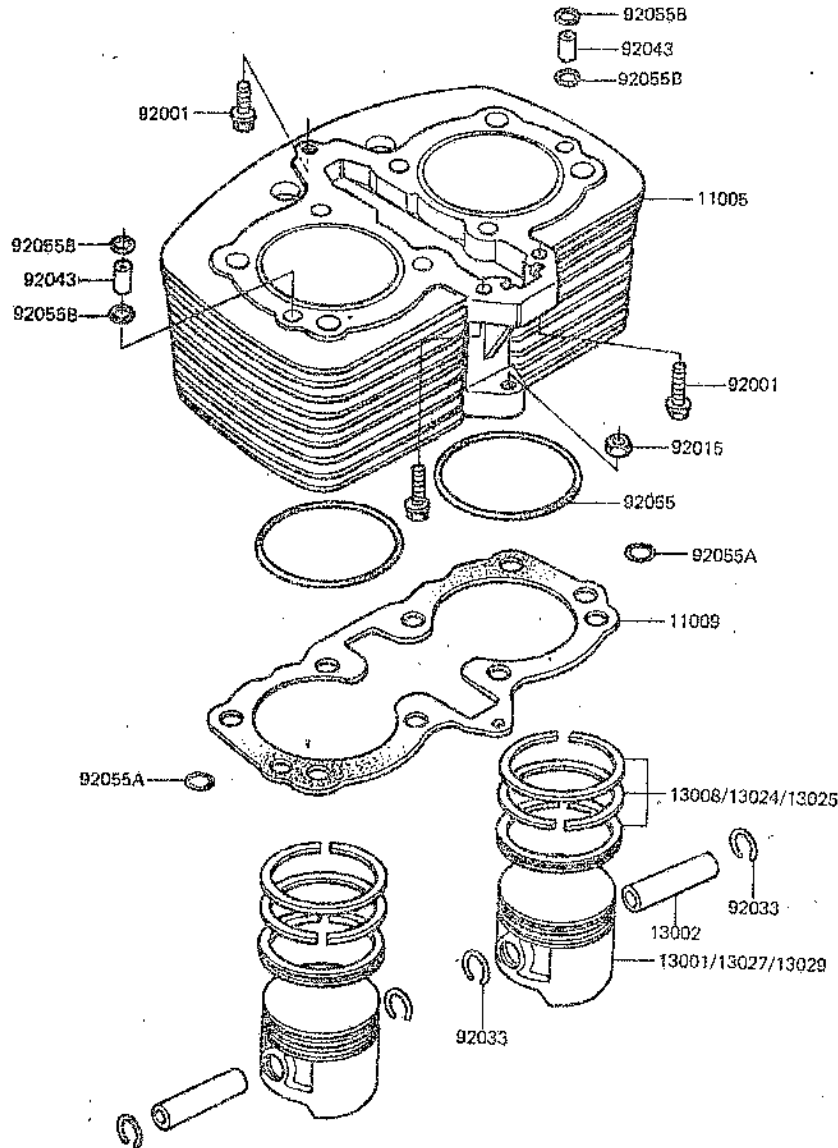
• Color	Fuel Tank	Ebony
	Front Fender	Luminous Midnight Red Chrome Platin
• Engine No.		KZ750BE053510 to Subsequent
• Frame No.		KZ750Y-000001 to Subsequent
• Owner's Manual No.		99922-1200-01
• A & P Manual No.		99939-1089-01
• Service Manual No.		99924-1013-04

2. Cylinder Head Cover

Ref. No.	Part No.	Description	Spec Code	Quantity— Z78	
				82	Y1
11009	11009-1246	GASKET, REED VALVE		2	
11009A	11009-1247	GASKET, CYLINDER HEAD COVER		1	
11012	11012-1212	CAP, CYLINDER HEAD COVER		2	
14025	14025-1333	COVER, CYLINDER HEAD		1	
92001	92003-092	BOLT, FLANGED, 6X45		14	
130	13060612	BOLT-FLANGED, 6X12		4	

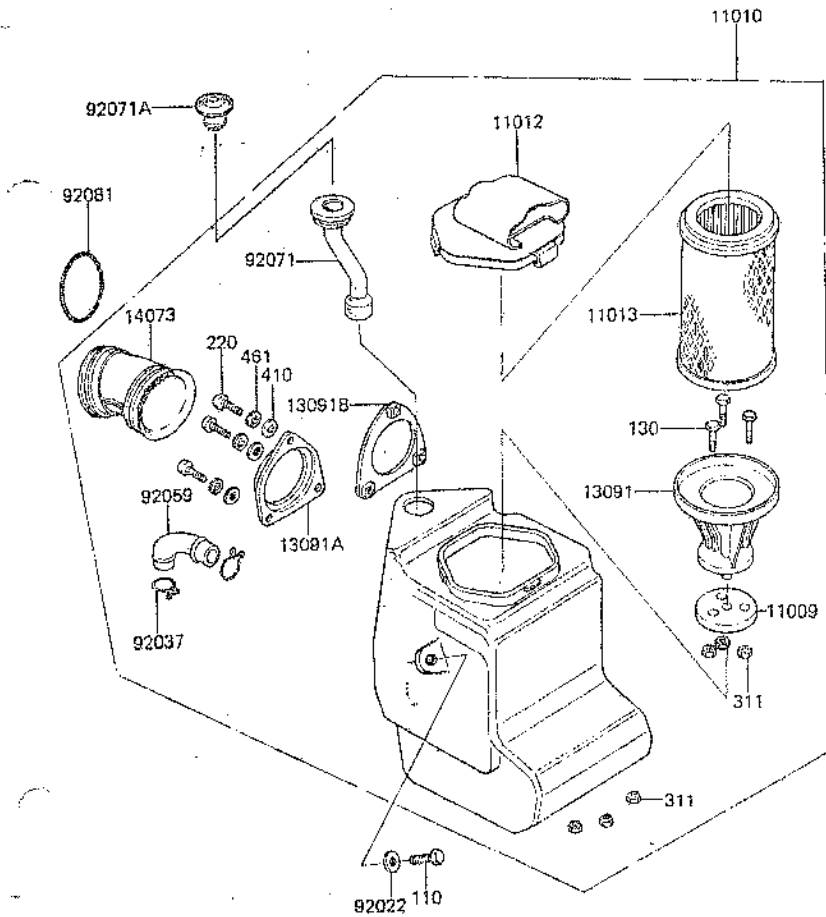


3. Cylinder, Piston



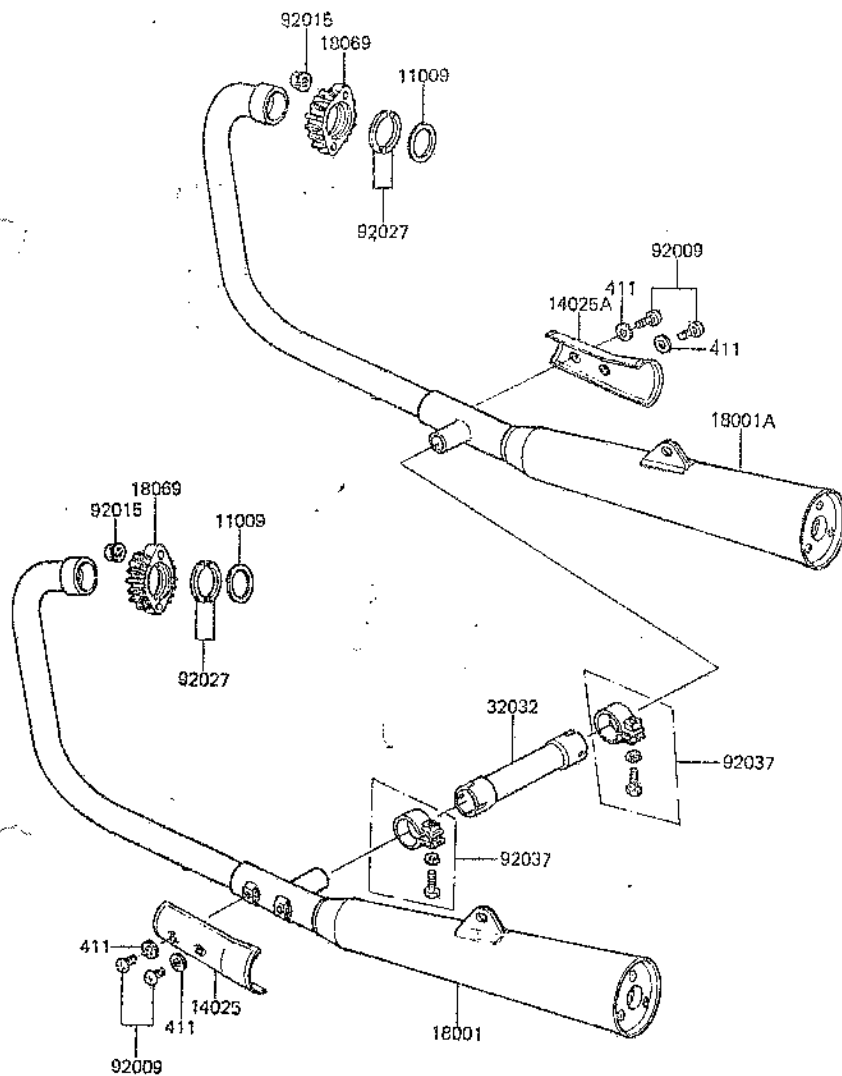
Ref. No.	Part No.	Description	Spec Code	Quantity	
				83	84
11005	11005-1158	CYLINDER-ENGINE			1
11009	11009-042	GASKET,CYLINDER BASE			1
13001	13001-1086	PISTON-ENGINE,STD			1
13002	13002-031	PIN-PISTON			2
13008	13008-055	RING-SET-PISTON,STD			2
13024	13024-059	RING-SET-PISTON-LL,0/S 1.00			2
13025	13025-059	RING-SET-PISTON-L,0/S 0.50			2
13027	13027-1038	PISTON-ENGINE LL,0/S 1.00			1
13029	13029-1039	PISTON-ENGINE L,0/S D.50			1
92001	92003-159	BOLT,FLANGED,6X34			3
92015	92015-1078	NUT,FLANGED,6MM			1
92033	92036-008	RING-SNAP,PISTON PIN			4
92043	92042-039	PIN,DOWEL			2
92055	92055-081	RING-O			2
92055A	92055-095	RING-O			2
92055B	92055-094	RING-O			4

4. Air Filter



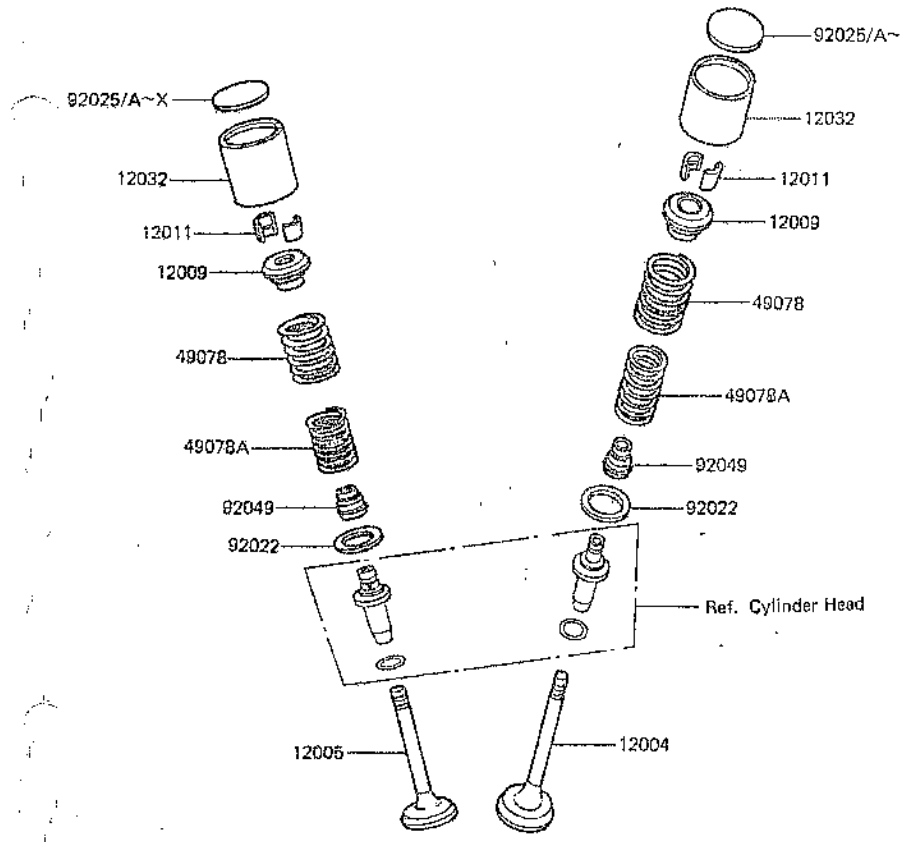
Ref. No.	Part No.	Description	Spec Code	Quantity - Z750	
				'82	'Y1
11009	11039-001	GASKET		1	
11010	11010-1087	FILTER-ASSY-AIR		1	
11012	11012-1189	CAP		1	
11013	11013-1045	ELEMENT-AIR FILTER		1	
13091	11033-004	HOLDER		1	
13091A	11040-004	HOLDER,AIR INLET DUCT		2	
13091B	11040-005	HOLDER,AIR INLET DUCT		2	
14073	14073-1061	DUCT		2	
92022	92022-125	WASHER,6.5X20X1.6		2	
92037	92037-192	CLAMP,BREATHER HOSE		2	
92059	92059-121	TUBE		1	
92071	92071-1033	GROMMET		1	
92071A	92071-1039	GROMMET		1	
92081	92081-1177	SPRING,COIL		2	
110	110B0616	BOLT,6X16		2	
130	130G0625	BOLT-FLANGED,6X25		3	
220	220B0416A	SCREW-PAN-CROS,6X16		6	
311	311B0600	NUT-HEX,6MM		6	
410	410B0400	WASHER-PLANE-SMALL,4MM		6	
461	461F0400	WASHER-SPRING,4MM		6	

5. Muffler



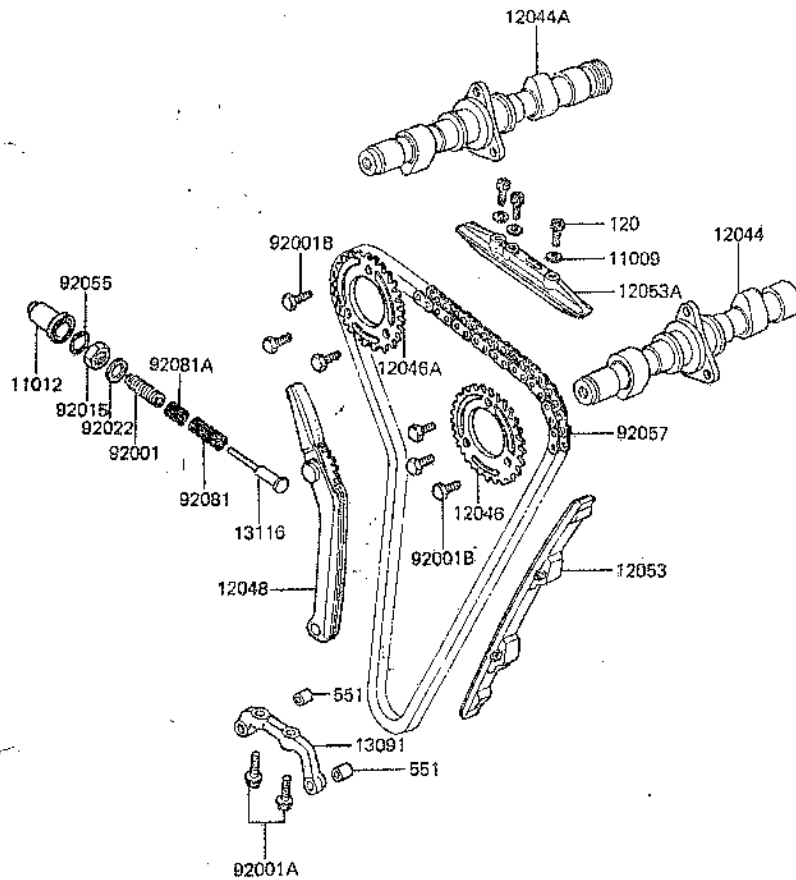
Ref. No.	Part No.	Description	Spec Code	Quantity	
				82	2750
11009	18067-013	GASKET, EXHAUST PIPE		2	
14025	14025-1194	COVER, MUFFLER, LH		1	
14025A	14025-1195	COVER, MUFFLER, RH		1	
18001	18001-1301	MUFFLER, LH, KHI KO41		1	
18001A	18001-1302	MUFFLER, RH, KHI KO41		1	
18069	18069-060	HOLDER-EXHAUST PIPE		2	
32032	18039-026	PIPE		1	
92009	92011-039	SCREW, 6X8		4	
92015	92015-1143	NUT, 8MM		4	
92027	92027-1241	COLLAR, EXHAUST PIPE		4	
92037	92037-1227	CLAMP, MUFFLER		2	
411	41100600	WASHER-PLANE, 6MM		4	

6. Valve



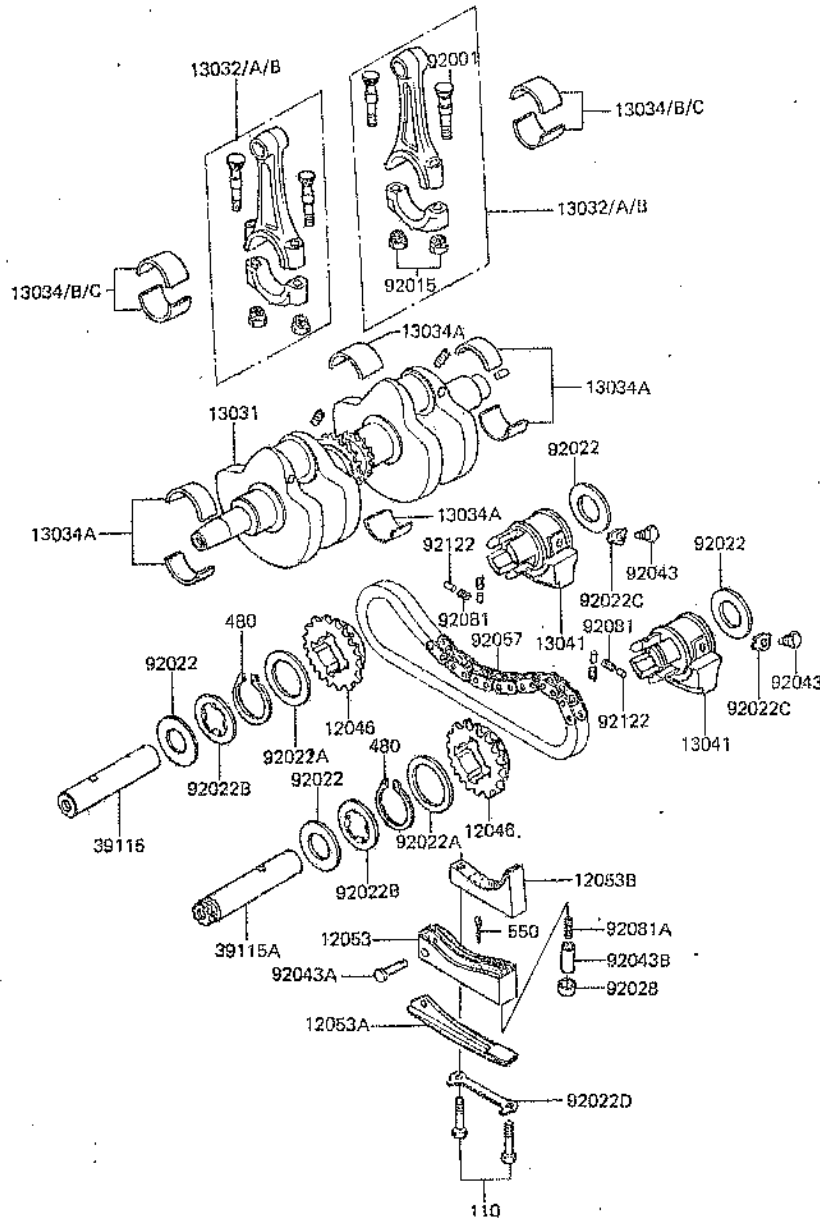
Ref. No.	Part No.	Description	Spec Code	Quantity-	
				82	Z7
12004	12004-014	VALVE-INTAKE		2	
12005	12005-007	VALVE-EXHAUST		2	
12009	12009-007	RETAINER-VALVE SPRING		4	
12011	12011-003	COLLET, VALVE SPRING		8	
12032	12032-006	TAPPET		4	
49078	12007-015	SPRING-ENGINE VALVE, OUTER		4	
49078A	12007-016	SPRING-ENGINE VALVE, INNER		4	
92022	92022-309	WASHER, 25X33, 5X1		4	
92025	12037-051	SHIM, T=2.20		AR	
92025A	12037-052	SHIM, T=2.25		AR	
92025B	12037-053	SHIM, T=2.30		AR	
92025C	12037-054	SHIM, T=2.35		AR	
92025D	12037-055	SHIM, T=2.40		AR	
92025E	12037-056	SHIM, T=2.45		AR	
92025F	12037-057	SHIM, T=2.50		AR	
92025G	12037-058	SHIM, T=2.55		AR	
92025H	12037-059	SHIM, T=2.60		AR	
92025I	12037-060	SHIM, T=2.65		AR	
92025J	12037-061	SHIM, T=2.70		AR	
92025K	12037-062	SHIM, T=2.75		AR	
92025L	12037-063	SHIM, T=2.80		AR	
92025M	12037-064	SHIM, T=2.85		AR	
92025N	12037-065	SHIM, T=2.90		AR	
92025O	12037-066	SHIM, T=2.95		AR	
92025P	12037-067	SHIM, T=3.00		AR	
92025Q	12037-068	SHIM, T=3.05		AR	
92025R	12037-069	SHIM, T=3.10		AR	
92025S	12037-070	SHIM, T=3.15		AR	
92025T	12037-071	SHIM, T=3.20		AR	
92025U	12037-072	SHIM, T=3.25		AR	
92025V	12037-073	SHIM, T=3.30		AR	
92025W	12037-074	SHIM, T=3.35		AR	
92025X	12037-075	SHIM, T=3.40		AR	
92049	92049-017	SEAL-OIL, VALVE		4	

7. Cams'ft, Tensioner



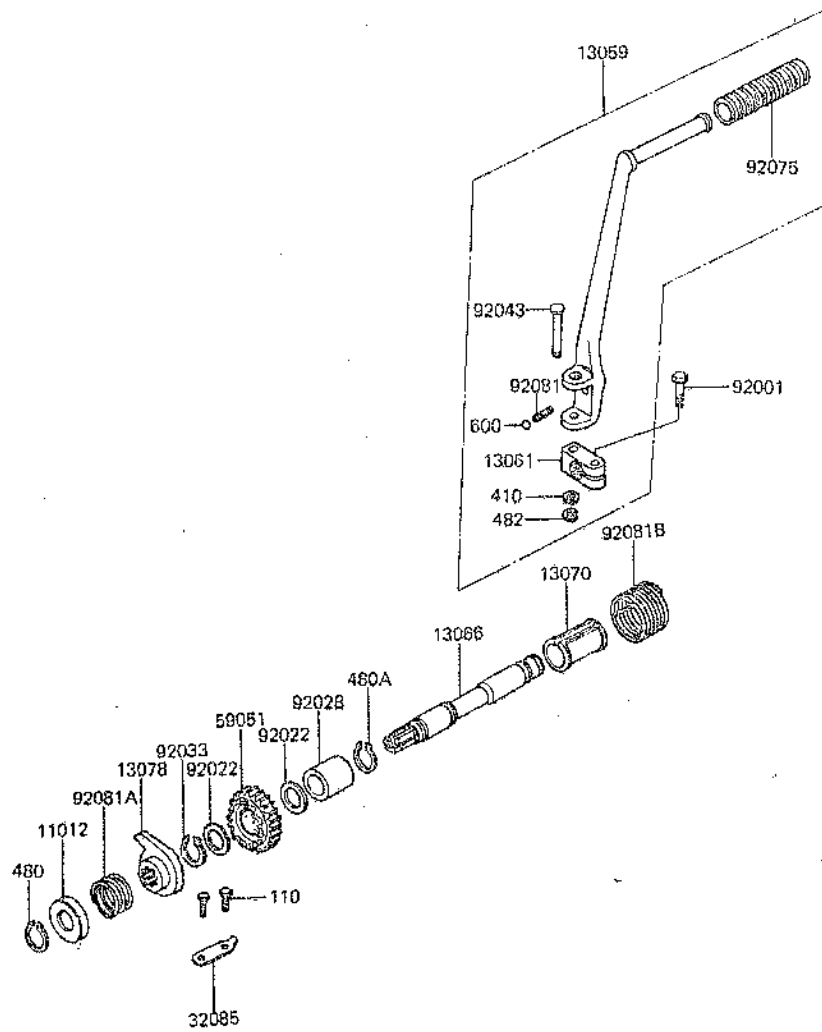
Ref. No.	Part No.	Description	Spec Code	Quantity-	
				82	2750
			Y1		
11009	92065-096	GASKET, FUEL TAP		3	
11012	12064-003	CAP, CHAIN TENSIONER		1	
12044	12044-010	CAMSHAFT-VALVE, INTAKE		1	
12044A	12044-020	CAMSHAFT-VALVE, EXHAUST		1	
12046	12046-006	SPROCKET, CAMSHAFT, INTAKE		1	
12046A	12046-007	SPROCKET, CAMSHAFT, EXHAUST		1	
12048	12048-005	TENSIONER-ASSY, CAM CHAIN		1	
12053	12053-015	GUIDE-CHAIN, CAM		1	
12053A	12053-1065	GUIDE-CHAIN		1	
13091	14018-006	HOLDER		1	
13116	13116-1001	ROD-PUSH		1	
92001	92001-1009	BOLT, PUSH ROD		1	
92001A	92003-202	BOLT, FLANGED, 6X28		2	
92001B	92003-208	BOLT, FLANGED, 6X17		6	
92015	92015-019	NUT, 18MM		1	
92022	92022-320	WASHER, 18.3X25X2		1	
92055	92055-095	RING-O		1	
92057	21070-011	CHAIN, CAMSHAFT, BF05TX130L		1	
92081	92081-1007	SPRING, PUSH ROD		1	
92081A	92081-1008	SPRING		1	
120	120PD614	BOLT-SOCKET, 6X14		3	
551	551A1032	PIN-DOWEL, 10X32		2	

8. Crankshaft



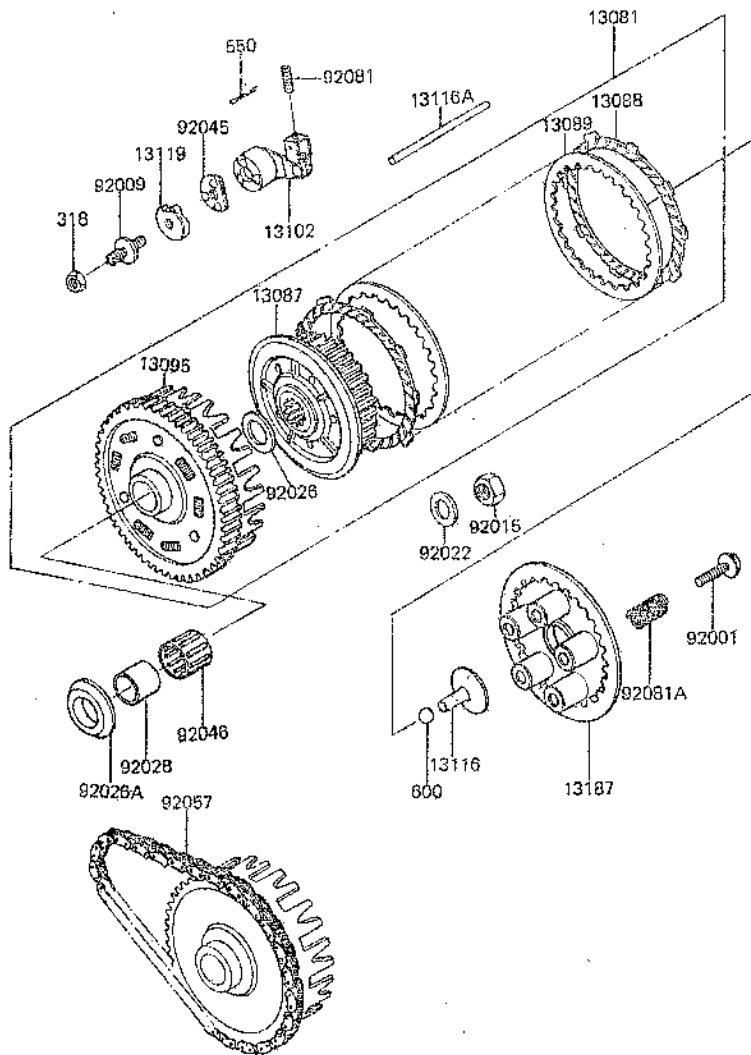
Ref. No.	Part No.	Description	Spec Code	Quantity-	
				82	Z7
				Y1	
12046	12046-008	SPROCKET, BALANCER			2
12053	12053-013	GUIDE-CHAIN, BALANCER			1
12053A	12053-014	GUIDE-CHAIN, BALANCER			1
12053B	12053-022	GUIDE-CHAIN, CAM			1
13031	13031-1005	CRANKSHAFT-COMP			1
13032	13032-051-HH	ROD-CONNECTING, H			2
13032A	13032-051-JJ	ROD-CONNECTING, J			2
13032B	13032-051-LL	ROD-CONNECTING, L			2
13034	13034-043	METAL, CONNECTING ROD			4
13034A	13034-044	METAL, CRANKSHAFT			6
13034B	13034-045	METAL, CONNECTING ROD			4
13034C	13034-046	METAL, CONNECTING ROD			4
13041	13041-005	BALANCER			2
39115	12052-007	SHAFT-IDLER, BALANCER			1
39115A	12052-008	SHAFT-IDLER, BALANCER			1
92001	92001-170	BOLT, CONNECTING ROD			4
92015	92016-059	NUT, 8MM			4
92022	92022-310	WASHER, 24, 3X44X1.2			4
92022A	92022-316	WASHER, 38, 3X50X1.2			2
92022B	92024-071	WASHER, TOOTHED, 35X44X1.2			2
92022C	92031-001	WASHER, LOCK, 10MM			2
92022D	92031-012	WASHER			1
92028	92028-185	BUSHING, SLIPPER			1
92043	92043-016	PIN, SELECT FORK GUIDE			2
92043A	92043-120	PIN, SPRING, 8X17			1
92043B	92043-122	PIN, SLIPPER FIT			1
92057	21070-009	CHAIN, BALANCER, BFO6HX62L			1
92081	92081-142	SPRING, BALANCER			8
92081A	92081-146	SPRING, TENSIONER			1
92122	92122-005	ROLLER, DOWEL			8
110	110G0655	BOLT, 6X55			2
480	480J3800	CIRCRIP-TYPE-C, 38MM			2
550	550D1615	PIN-COTTER, 1.6X15			1

9. Kickstarter Mechanism



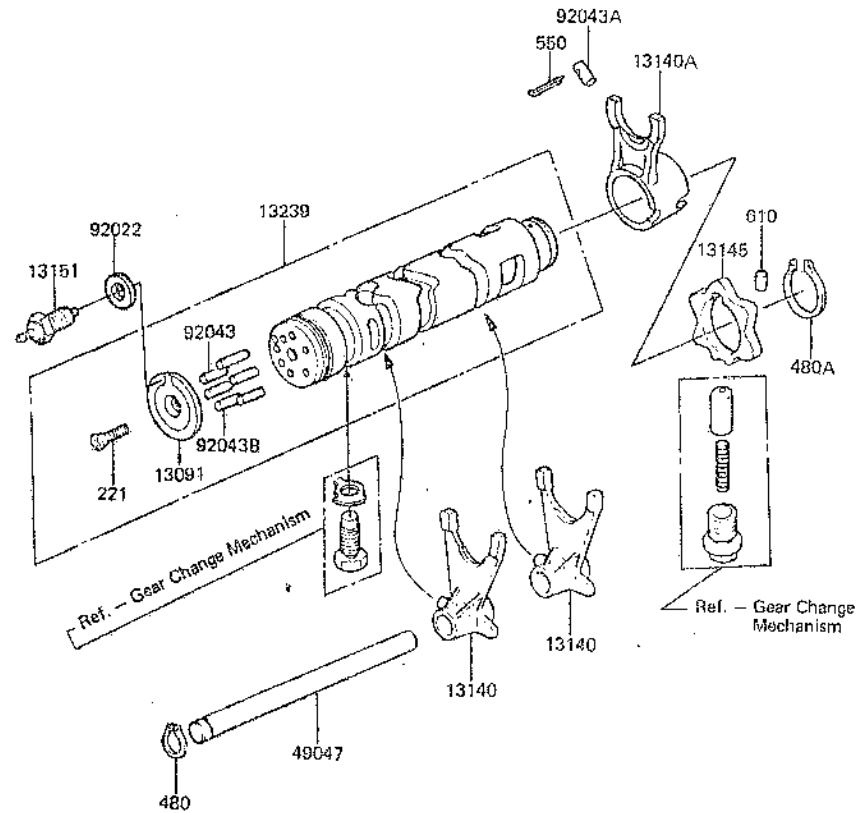
Ref. No.	Part No.	Description	Spec Code	Quantity	
				52	2750
11012	92102-008	CAP,KICKSTARTER		1	
13059	13058-061	LEVER-KICK		1	
13061	13061-010	BOSS		1	
13066	13066-1004	SHAFT-KICK		1	
13070	13070-1008	GUIDE,KICK SPRING		1	
13078	13078-011	RATCHET		1	
32085	13072-012	STOPPER,KICKSTARTER		1	
59051	59051-1005	GEAR-SPUR,KICKSTARTER		1	
92001	92001-110	BOLT		1	
92022	92022-207	WASHER,22.3X30X1		2	
92028	92028-126	BUSHING,22X30X19		1	
92033	92033-025	RING-SNAP,22MM		1	
92043	92043-081	PIN		1	
92075	13063-004	DAMPER,KICK PEDAL		1	
92081	92081-020	SPRING,KICK PEDAL		1	
92081A	92081-104	SPRING,RATCHET		1	
92081B	92082-004	SPRING,KICKSTARTER		1	
110	110G0614	BOLT,6X14		2	
410	410B0300	WASHER-PLANE-SMALL,8MM		1	
480	480J1900	CIRCRIP-TYPE-C,19MM		1	
480A	480J2200	CIRCRIP-TYPE-C,22MM		1	
482	482K5000	CIRCRIP-TYPE-E,5MM		1	
600	600A0600	BALL-STEEL,1/4"		1	

10. Clutch



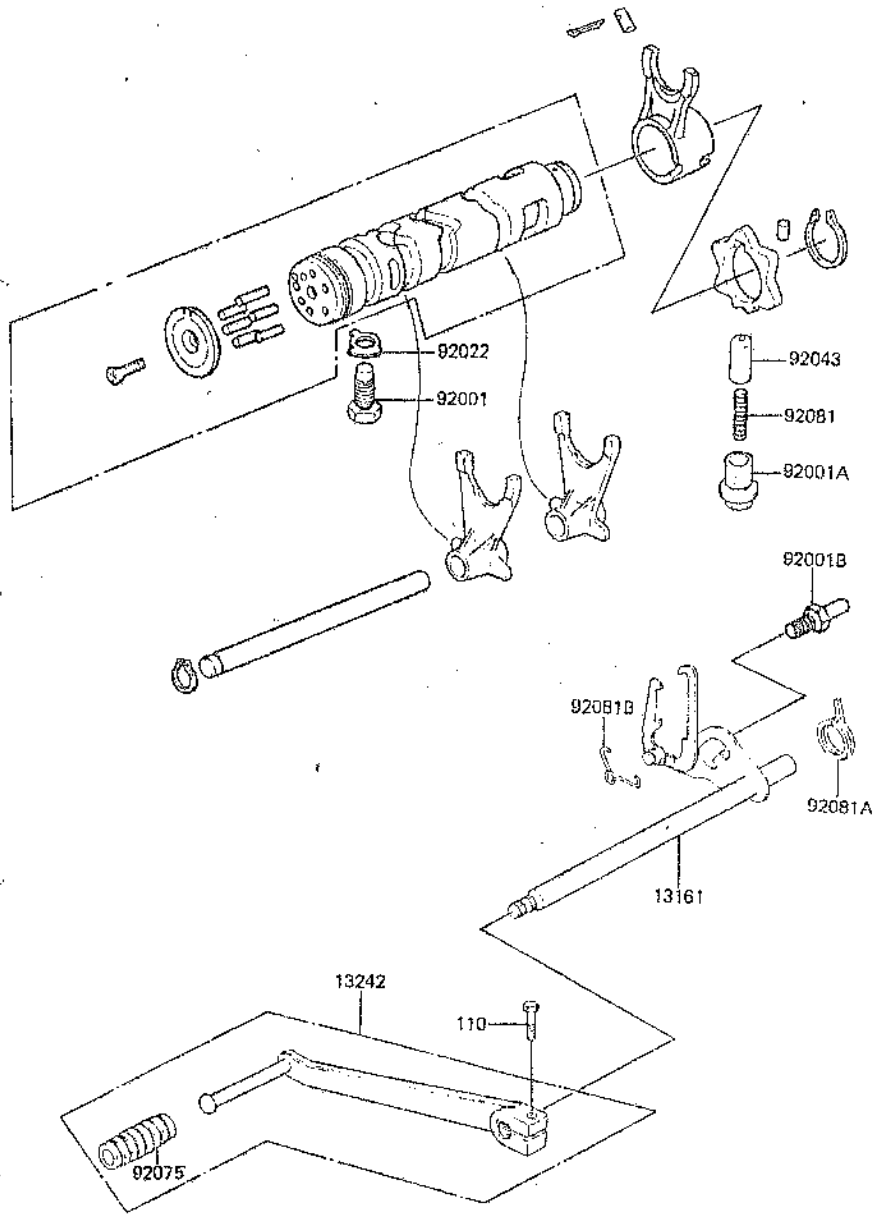
Ref. No.	Part No.	Description	Spec Code	Quantity-	
				B2	Z750
13081	13081-1069	CLUTCH-ASSY		1	
13087	13087-042	HUB-CLUTCH		1	
13088	13088-1013	PLATE-FRICTION		8	
13089	13089-027	PLATE-CLUTCH		7	
13095	13095-050	HOUSING-COMP-CLUTCH		1	
13102	13102-1012	RELEASE-COMP-CLUTCH		1	
13116	13116-022	ROD-PUSH, CLUTCH SPRING PLATE		1	
13116A	13116-1007	ROD-PUSH, CLUTCH, 8X270		1	
13119	13119-1003	CAM-RELEASE, CLUTCH		1	
13187	13187-008	PLATE-CLUTCH OPERATING		1	
92001	92001-1066	BOLT, CLUTCH SPRING, 6X18		5	
92009	92009-1009	SCREW, 8MM		1	
92015	92015-1053	NUT, 20MM		1	
92022	92022-1116	WASHER, 20.3X36X2.3		1	
92026	92026-022	SPACER, 25.5X47X2.5		1	
92026A	92026-123	SPACER		1	
92028	92028-178	BUSHING, 25X32X23.6		1	
92045	92045-1001	BEARING-BALL, CLUTCH RELEASE		1	
92046	92046-028	BEARING-NEEDLE, KTV323723		1	
92057	13122-008	CHAIN, 63-139X76L (TUBAKIMOTO)		1	
92081	92081-069	SPRING, CLUTCH RELEASE		1	
92081A	92081-1033	SPRING, CLUTCH		5	
318	31880800	NUT-HEX-SMALL, 8MM		1	
550	550D1615	PIN-COTTER, 1.6X15		1	
600	600A1200	BALL-STEEL, 3/8"		1	

12. Change Drum, Shift Fork



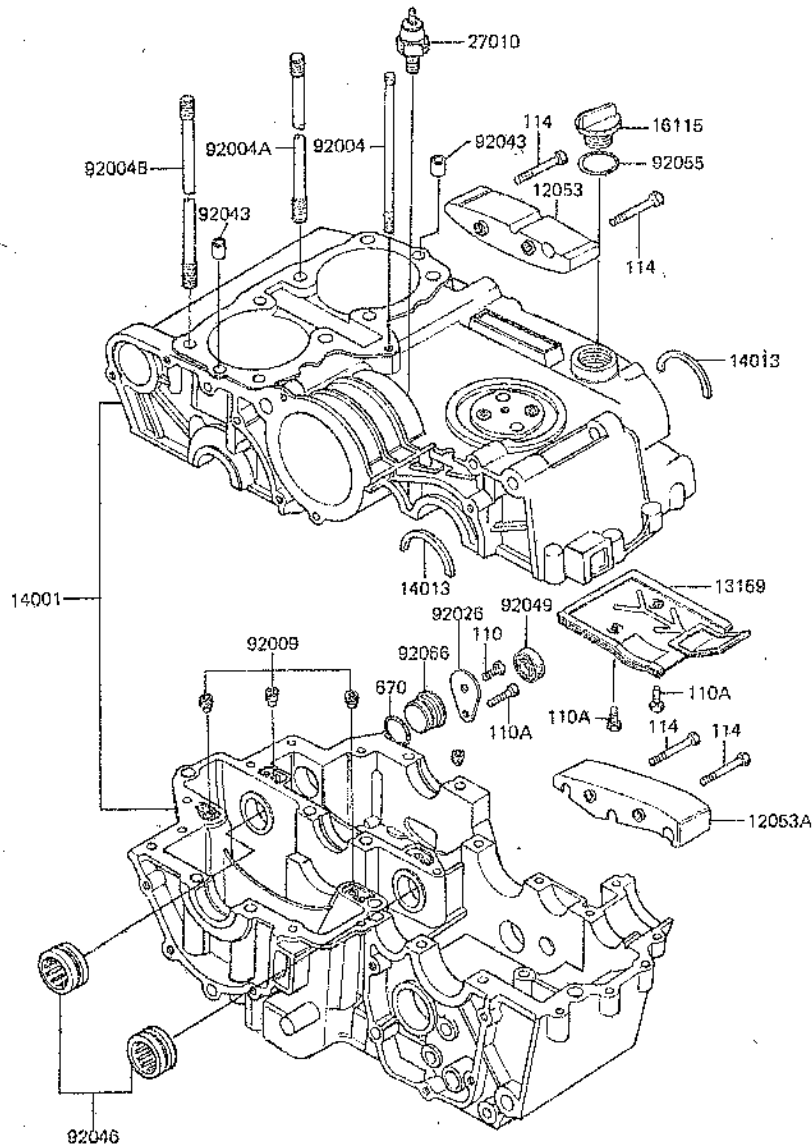
Ref. No.	Part No.	Description	Spec Code	Quantity -	
				W2	Y1
13091	13091-1104	HOLDER, CHANGE DRUM PIN			1
13140	13140-1008	FORK-SHIFT, LOW, 2ND&3RD			2
13140A	13140-1009	FORK-SHIFT, 4TH&TOP			1
13145	13145-1001	CAM-CHANGE DRUM			1
13151	13151-1007	SWITCH-COMP, NEUTRAL			1
13239	13239-1017	DRUM-ASSY-CHANGE			1
49047	13209-019	ROD-SHIFT			1
92022	92022-1208	WASHER, 10X16X1			1
92043	92042-014	PIN, DOWEL, 4X15, 8			1
92043A	92042-021	PIN, DOWEL, 8X18			1
92043B	92042-030	PIN, DOWEL, 4X13, 8			5
221	221B0620	SCREW-CSK-CROS, 6X20			1
480	480J1200	CIRCRIP-TYPE-C, 12MM			1
480A	480J3000	CIRCRIP-TYPE-C, 30MM			1
550	550D3020	PIN-COTTER, 3, 0X20			1
610	610A0406	ROLLER, 4X6			1

13. Gear Change Mechanism



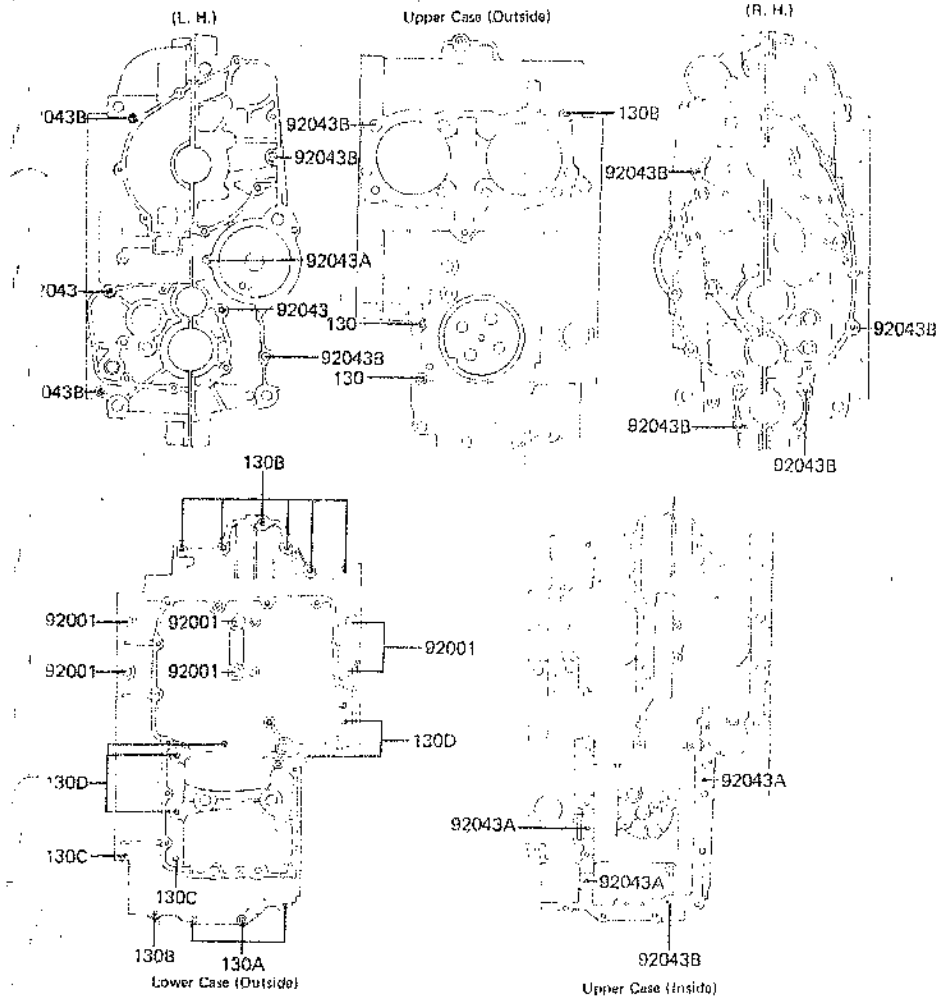
Ref. No.	Part No.	Description	Spec Code	Quantity-	
				82	27
			Y1		
13161	13161-042	LEVER-COMP-CHANGE SHAFT		1	
13242	13242-1002	LEVER-ASSY-CHANGE		1	
92001	92001-1052	BOLT, CHANGE DRUM POSITION		1	
92001A	92001-131	BOLT, FLANGED, 16X16.5		1	
92001B	92001-1401	BOLT, RETURN SPRING		1	
92022	92024-047	WASHER, LOCK		1	
92043	92043-076	PIN, NEUTRAL POSITION		1	
92075	13157-007	DAMPER, CHANGE PEDAL		1	
92081	92081-112	SPRING, NEUTRAL POSITION		1	
92081A	92083-018	SPRING		1	
92081B	92083-028	SPRING, CHANGE PEDAL RETURN		1	
110	110G0620	BOLT, 6X20		1	

14. Crankcase



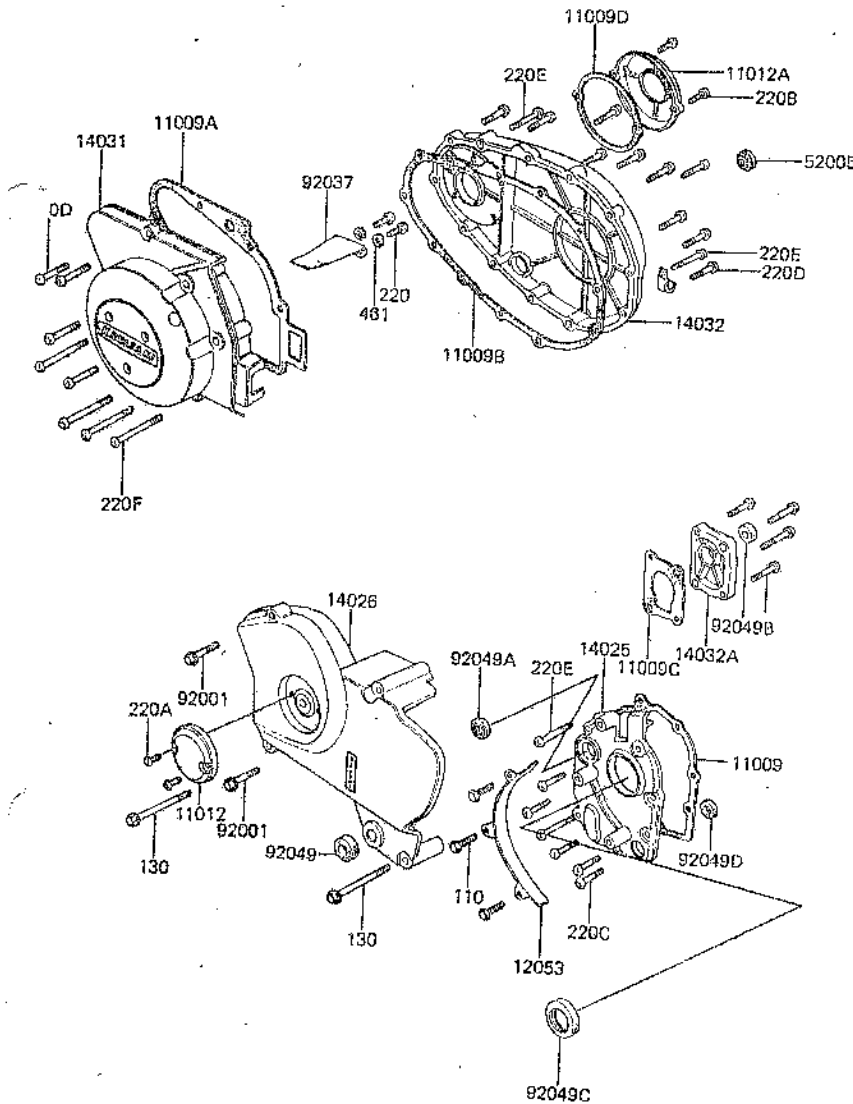
Ref. No.	Part No.	Description	Spec Code	Quantity--	
				92	Z750
				Y1	
12053	12053-020	GUIDE-CHAIN,PRIMARY		1	
12053A	12053-021	GUIDE-CHAIN,PRIMARY		1	
13169	14068-008	PLATE,BREATHER		1	
14001	14001-5092	SET-CRANKCASE		1	
14013	14013-004	RING-POSITION,62MM		2	
16115	16115-013	CAP-OIL FILLER		1	
27010	27010-1037	SWITCH,OIL PRESSURE		1	
92004	92004-059	STUD,6X22		1	
92004A	92004-1002	STUD,10X167		4	
92004B	92004-1003	STUD,10X158		4	
92009	92013-007	SCREW,10MM		4	
92026	92026-115	SPACER		1	
92043	92042-028	PIN,DOWEL,11X14X12.5		2	
92046	92046-048	BEARING-NEEDLE,24NQ3620WD		4	
92049	92050-065	SEAL-OIL,S25407		1	
92055	92055-049	RING-O,31MM		1	
92066	92066-049	PLUG,BALANCER,36.2X17		1	
110	110B0608	BOLT,6X8		1	
110A	110B0614	BOLT,6X14		3	
114	114G0835	BOLT-SMALL,8X35		4	
670	670B3030	O RING,30MM		1	

15. Crankcase Bolt Pattern



Ref. No.	Part No.	Description	Spec Code	Quantity -	
				82	27
92001	92003-187	BOLT, FLANGED, 10X115		6	
92043	92042-007	PIN, DOWEL, 6.3X8X14		2	
92043A	92042-016	PIN, DOWEL, 6X16		4	
92043B	92043-1037	PIN, DOWEL, 10X14		10	
130	130G06105	BOLT-FLANGED, 6X105		2	
130A	130G0640	BOLT-FLANGED, 6X40		3	
130B	130G0655	BOLT-FLANGED, 6X55		8	
130C	130G0670	BOLT-FLANGED, 6X70		2	
130D	130G0695	BOLT-FLANGED, 6X95		5	

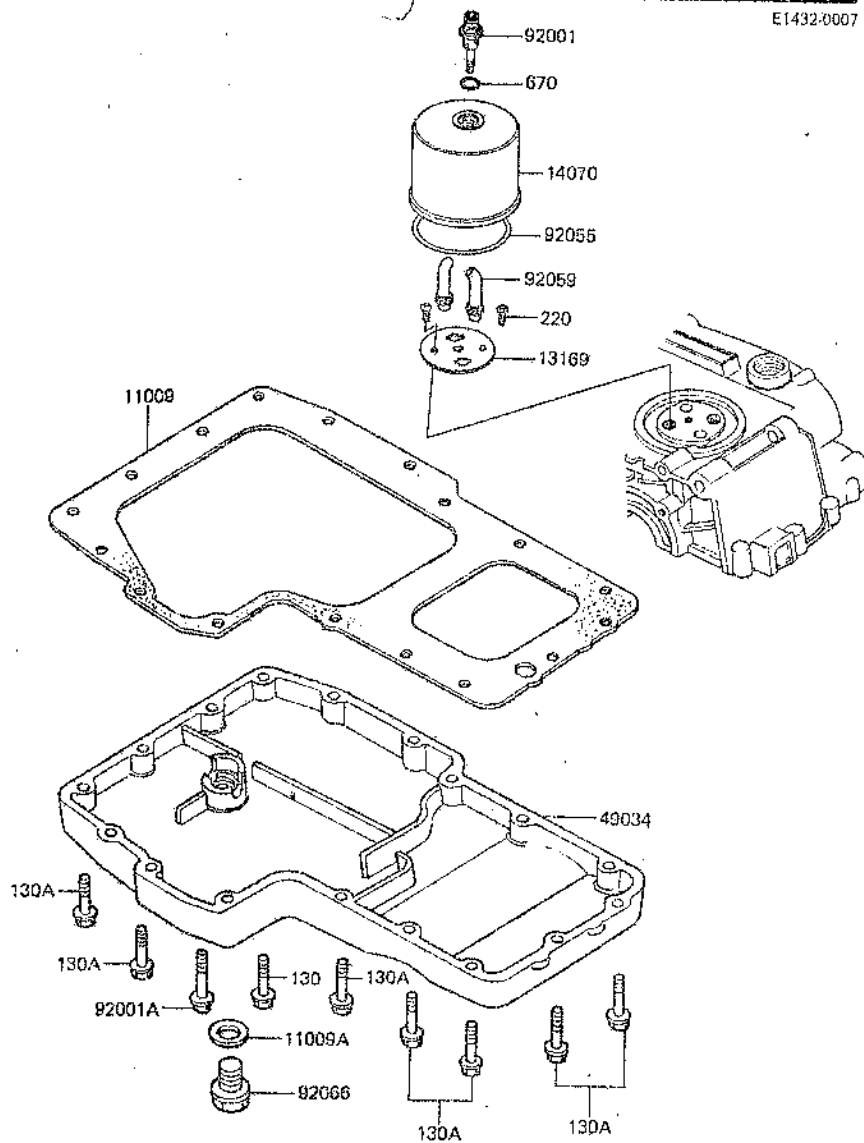
16. Engine Cover



Ref. No.	Part No.	Description	Spec Code	Quantity	
				Z75G	Y3
11009	11009-1167	GASKET,MISSION COVER		1	
11009A	14045-025	GASKET,GENERATOR COVER		1	
11009B	14046-033	GASKET,CLUTCH COVER		1	
11009C	14046-034	GASKET,CLUTCH COVER		1	
11009D	14050-010	GASKET,CONTACT BREAKER CAP		1	
11012	11012-1210	CAP,CLUTCH ADJUSTING CAP		1	
11012A	14027-019-80	CAP,CONTACT BREAKER		1	
12053	12053-1006	GUIDE-CHAIN		1	
14025	14024-011	COVER,MISSION		1	
14026	14026-1058	COVER-CHAIN		1	
14031	14031-1044	COVER-GENERATOR		1	
14032	14032-1031	COVER-CLUTCH		1	
14032A	14032-112-2H	COVER-CLUTCH,BARREL		1	
52005	52005-1009	GAUGE,OIL LEVEL		1	
92001	92003-159	BOLT,FLANGED,6X34		2	
92037	92037-1122	CLAMP,GENERATOR LEAD		1	
92049	92049-1003	SEAL-OIL,CLUTCH RELEASE		1	
92049A	92049-1017	SEAL-OIL,SD-81B7		1	
92049B	92049-1048	SEAL-OIL,SC22325		1	
92049C	92050-024	SEAL-OIL,SC325210		1	
92049D	92051-005	SEAL-OIL,TB13225.5		1	
110	11080614	BOLT,6X14		3	
130	13060695	BOLT-FLANGED,6X95		2	
220	22000512A	SCREW-PAN-CROS,5X12		2	
220A	22080616	SCREW-PAN-CROS,6X16		2	
220B	22080618	SCREW-PAN-CROS,6X18		2	
220C	22080620	SCREW-PAN-CROS,6X20		5	
220D	22080630	SCREW-PAN-CROS,6X30		16	
220E	22080640	SCREW-PAN-CROS,6X40		6	
220F	22080660	SCREW-PAN-CROS,6X60		4	
461	461F0500	WASHER-SPRING,5MM		2	

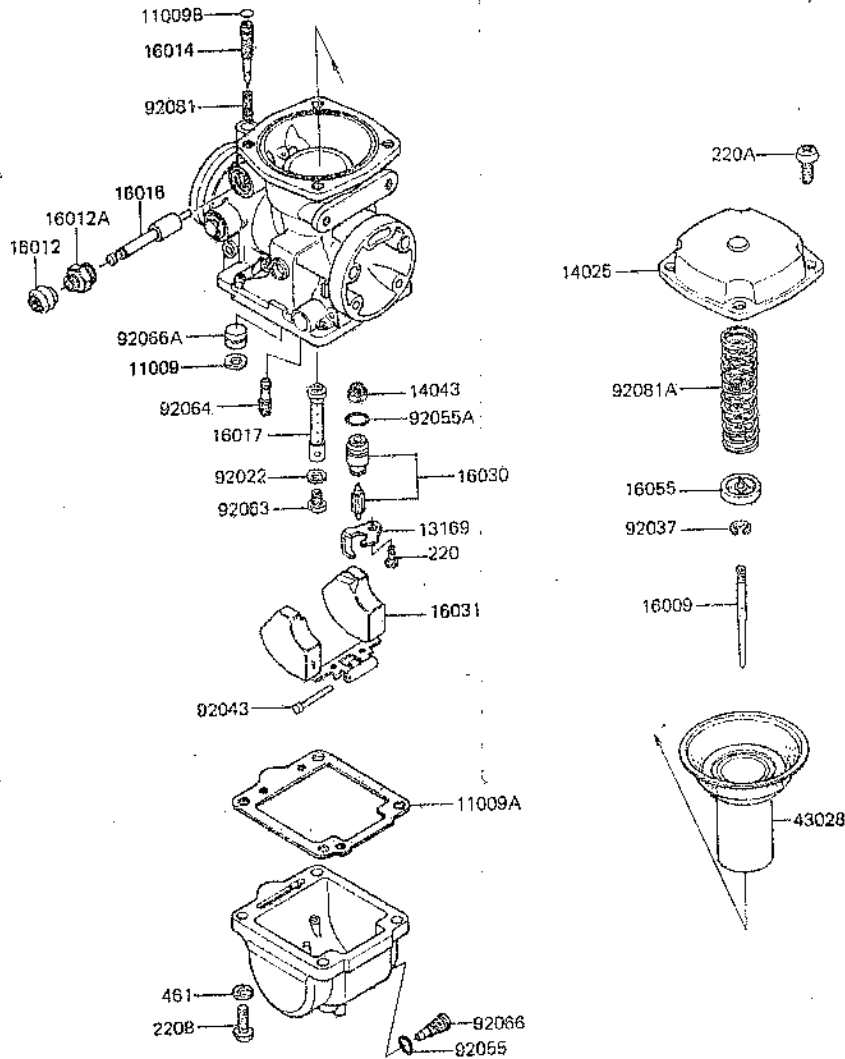
17. Engine Cover "A"

E1432-0007



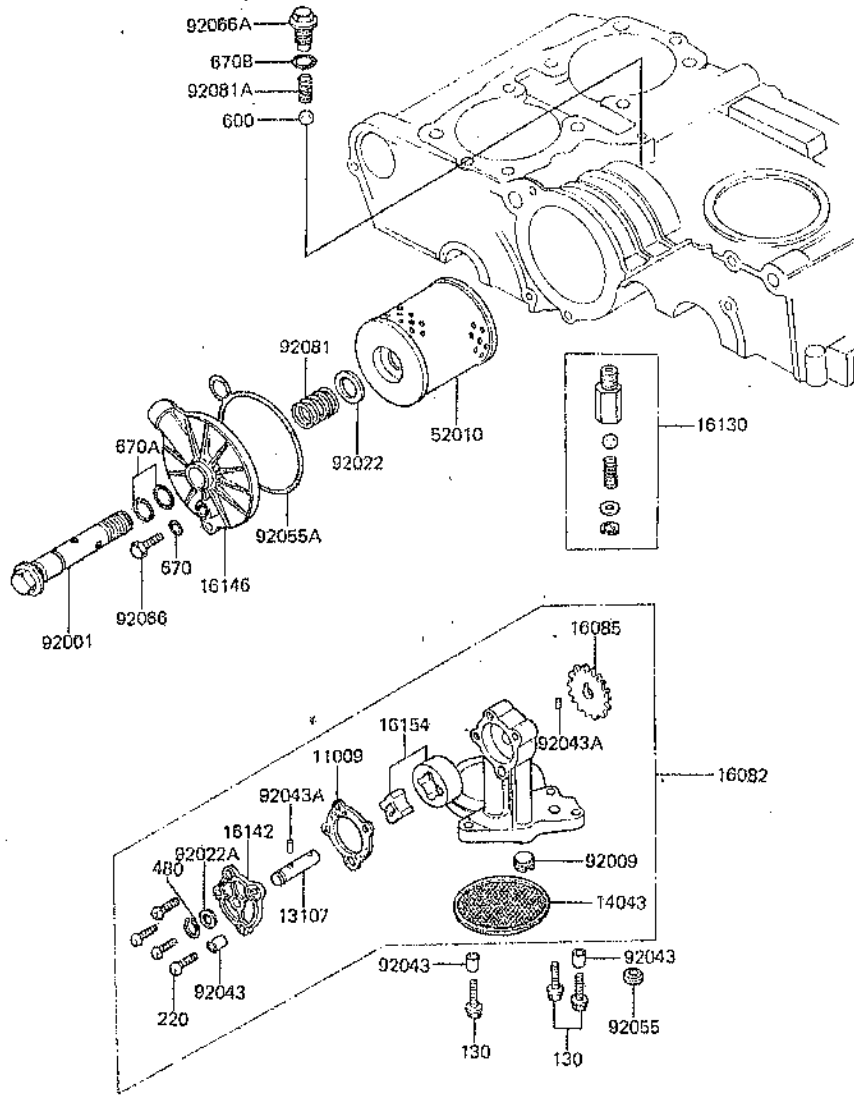
Ref. No.	Part No.	Description	Spec Code	Quantity	
				'82	'87
				Y1	
11009	16112-004	GASKET,OIL PAN			1
11009A	92065-097	GASKET,DRAIN PLUG			1
13169	14068-007	PLATE,BREATHER			1
14070	14070-007	BODY-BREATHER			1
49034	49034-1013	PAN-OIL			1
92001	92003-098	BOLT,BREATHER FITTING			1
92001A	92003-159	BOLT,FLANGED,6X34			1
92055	92055-052	RING-O,91MM			1
92059	92059-140	TUBE,BREATHER			1
92066	92066-053	PLUG,OIL DRAIN,12X15			2
					1
130	130G0620	BOLT-FLANGED,6X20			1
130A	130G0625	BOLT-FLANGED,6X25			15
220	220B0618	SCREW-PAN-CROS,6X18			2
670	670B2016	O RING,16MM			1

19. Carburetor "A"



Ref. No.	Part No.	Description	Spec Code	Quantity-	
				'82	'81
11009	11009-1240	GASKET		2	
11009A	11009-1241	GASKET, FLOYD CHAMBER		2	
11009B	16038-022	GASKET, "O"RING		2	
13169	13169-1482	PLATE, FLOAT VALVE		2	
14025	14025-1395	COVER, MIXING CHAMBER		2	
14043	14043-1010	FILTER, FLOAT VALVE		2	
16009	16009-1101	NEEDLE-JET, SC48		2	
16012	16012-1010	CAP-STARTER PLUNGER, RUBBER		2	
16012A	16012-1011	CAP-STARTER PLUNGER		2	
16014	16014-1014	SCREW-PILOT AIR		2	
16016	16016-1019	PLUNGER		2	
16017	16017-1100	JET-NEEDLE, Y-9		2	
16030	16030-1016	VALVE-FLOAT		2	
16031	16031-1013	FLOAT		2	
16055	16055-010	PLATE, NEEDLE		2	
43028	43028-1028	DIAPHRAGM		2	
92022	16034-001	WASHER, MAIN JET		2	
92037	16008-014	CLAMP, E-TYPE		2	
92043	16032-008	PIN, FLOAT		2	
92055	92055-044	RING-O		2	
92055A	92055-1105	RING-O		2	
92063	92063-076	JET-MAIN, #115R		2	
92064	92064-1040	JET-PILOT, #45		2	
92066	92066-1064	PLUG, DRAIN		2	
92066A	92066-1086	PLUG, CARBURATOR		2	
92081	16022-016	SPRING, PILOT SCREW		2	
92081A	92081-1363	SPRING, DIAPHRAGM VALVE		2	
220	220B0406A	SCREW-PAN-CROS, 4X6		2	
220A	220B0510A	SCREW-PAN-CROS, 5X10		8	
220B	220B0516A	SCREW-PAN-CROS, 5X16		8	
461	461F0500	WASHER-SPRING, 5MM		8	

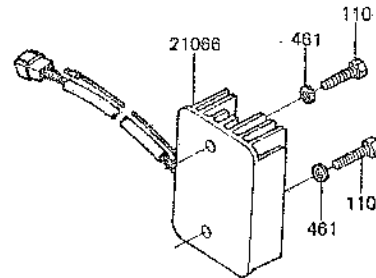
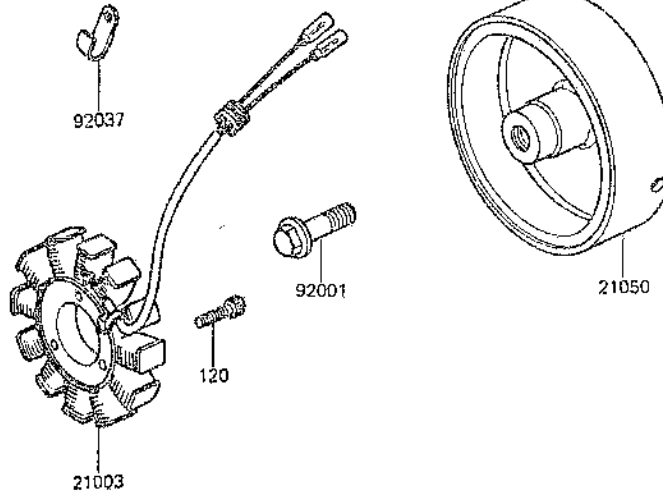
20. Oil Pump



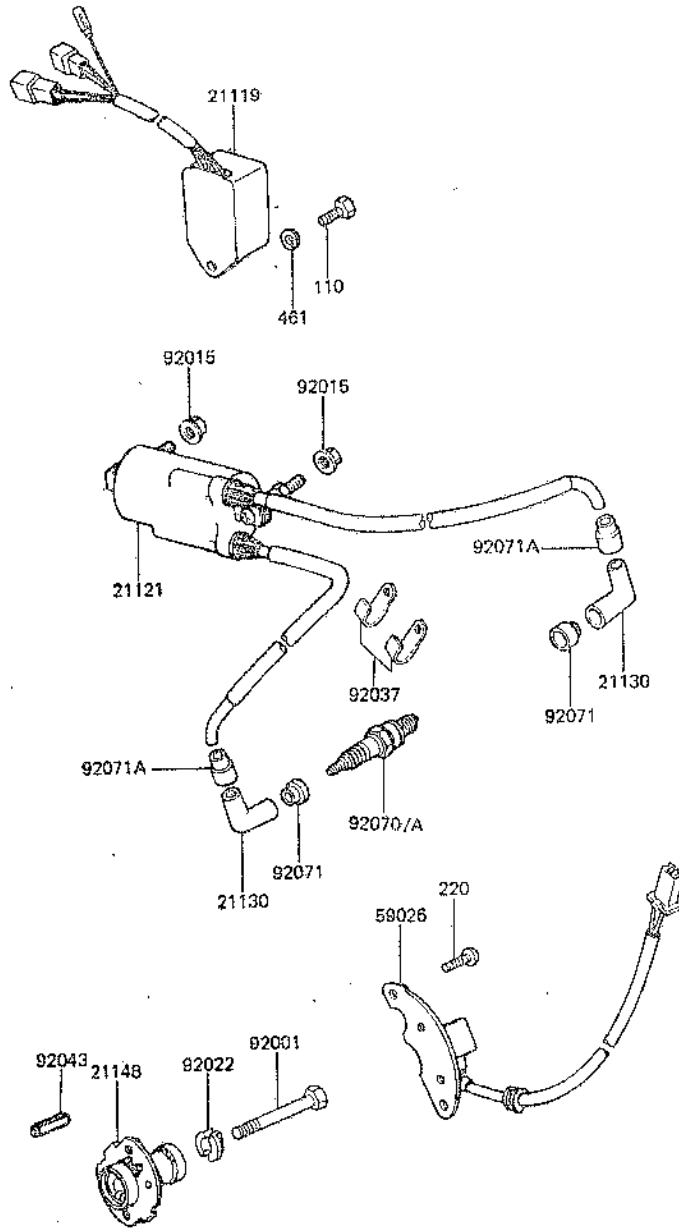
Ref. No.	Part No.	Description	Spec Code	Quantity-	
				Y1	Y2
11009	16145-003	GASKET,OIL PUMP		1	
13107	16086-004	SHAFT,OIL PUMP		1	
14043	16111-004	FILTER,OIL PUMP		1	
16082	16082-062	PUMP-ASSY-OIL		1	
16085	16085-024	GEAR		1	
16130	16130-1001	VALVE-ASSY-RELIEF		1	
16142	16142-004	COVER-PUMP		1	
16146	16146-002	COVER-ASSY,OIL FILTER		1	
16154	16154-003	ROTOR-PUMP		1	
52010	16099-002	ELEMENT-OIL FILTER		1	
92001	92003-189	BOLT,OIL FILER		1	
92009	92013-008	SCREW,SET,18X10		1	
92022	92022-1012	WASHER,20,5X30X1		1	
92022A	92022-311	WASHER,11,2X15X1		1	
92043	92042-038	PIN,00WEL,8X10		3	
92043A	92042-041	PIN,DOWEL,4X12,8		2	
92055	92055-048	RING-O,OD=18		2	
92055A	92055-084	RING-O		1	
92066	92066-024	PLUG,OIL DRAIN,8X16		1	
92066A	92066-050	PLUG,BYPASS,16X12		1	
92081	92081-1018	SPRING,OIL FILTER		1	
92081A	92081-109	SPRING		1	
130	130G0640	BOLT-FLANGED,6X40		3	
220	220B0622	SCREW-PAN-CROS,6X22		4	
480	480J1100	CIRCRIP-TYPE-C,11MM		1	
600	600A1200	BALL-STEEL,3/8"		1	
670	670B1508	O RING,8MM		1	
670A	670B2016	O RING,16MM		2	
670B	670B2018	O RING,18MM		1	

21. Generator

Ref. No.	Part No.	Description	Spec Code	Quantity-- Z790			
				B2			
				Y1			
21003	21003-1006	STATOR				1	
21050	21050-1004	FLYWHEEL, GENERATOR				1	
21066	21066-1014	REGULATOR-VOLTAGE				1	
92001	92001-1012	BOLT, FLANGED, 12X40				1	
92037	21126-008	CLAMP, WIRING HARNESS				1	
110	110B0616	BOLT, 6X16				2	
120	120P0628	BOLT-SOCKET, 6X28				3	
461	461F0600	WASHER-SPRING, 6MM				2	

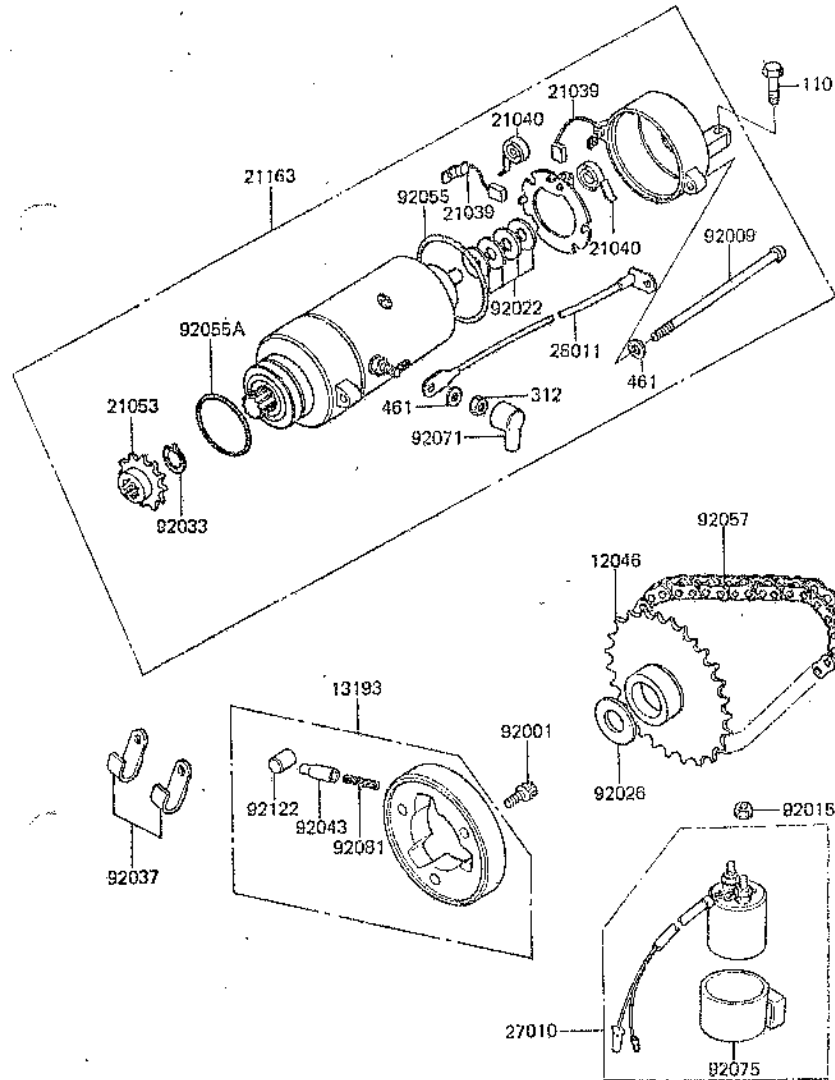


22. Ignition Coil



Ref. No.	Part No.	Description	Spec Code	Quantity-	
				92	Z75C
21119	21119-1046	IGNITER		1	
21121	21121-1041	COIL-IGNITION		1	
21130	21130-024	CAP-SPARK PLUG		2	
21148	21148-1024	GOVERNOR-BREAKER		1	
59026	59026-1010	COIL-PULSING		1	
92001	92001-1397	BOLT, 8X63		1	
92015	92015-1078	NUT, FLANGED, 6MM		2	
92022	92022-244	WASHER, BREAKER GOVERNOR		1	
92037	21126-008	CLAMP, WIRING HARNESS		2	
92043	92042-034	PIN, DOWEL, 4X8		1	
92070	92070-1025	PLUG-SPARK, BPR6ES(NGK)		2	
92070A		PLUG-SPARK, W20EPR-U(ND) (LOCAL PROCUREMENT ITEM)		2	
92071	21131-004	GROMMET, PLUG CAP		2	
92071A	21132-005	GROMMET, HIGH TENSION		2	
110	11080616	BOLT, 6X16		1	
220	220B0512A	SCREW-PAN-CROS, 5X12		2	
461	461FD600	WASHER-SPRING, 6MM		1	

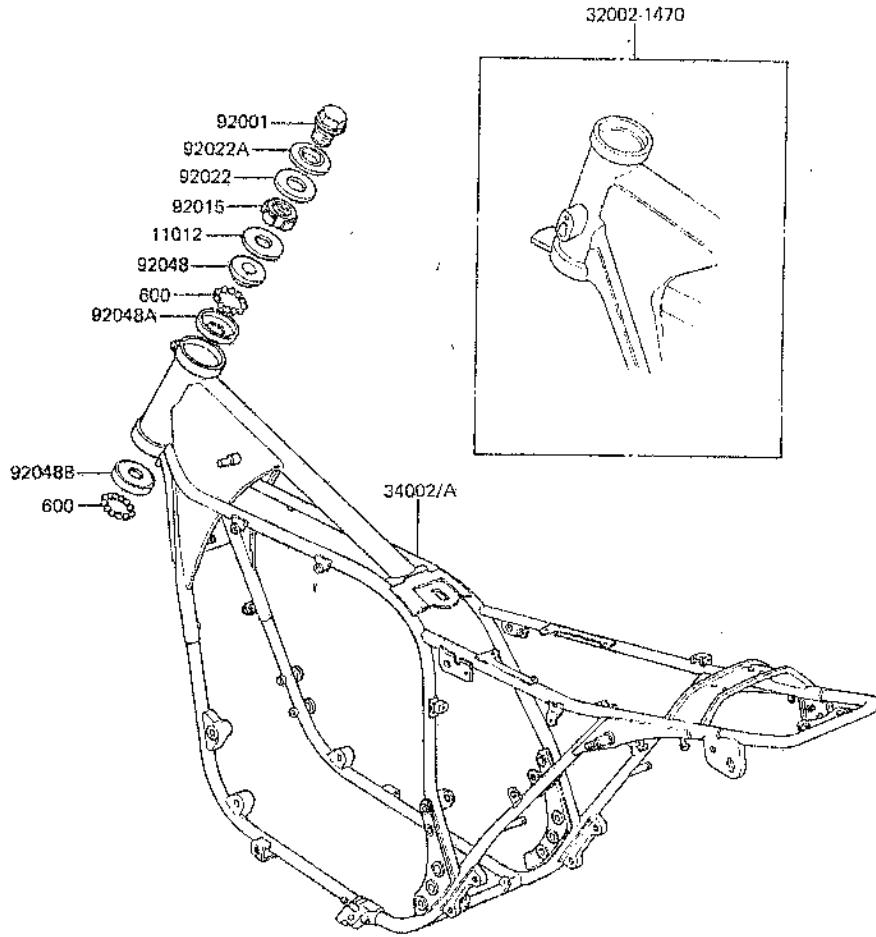
23. Star Motor



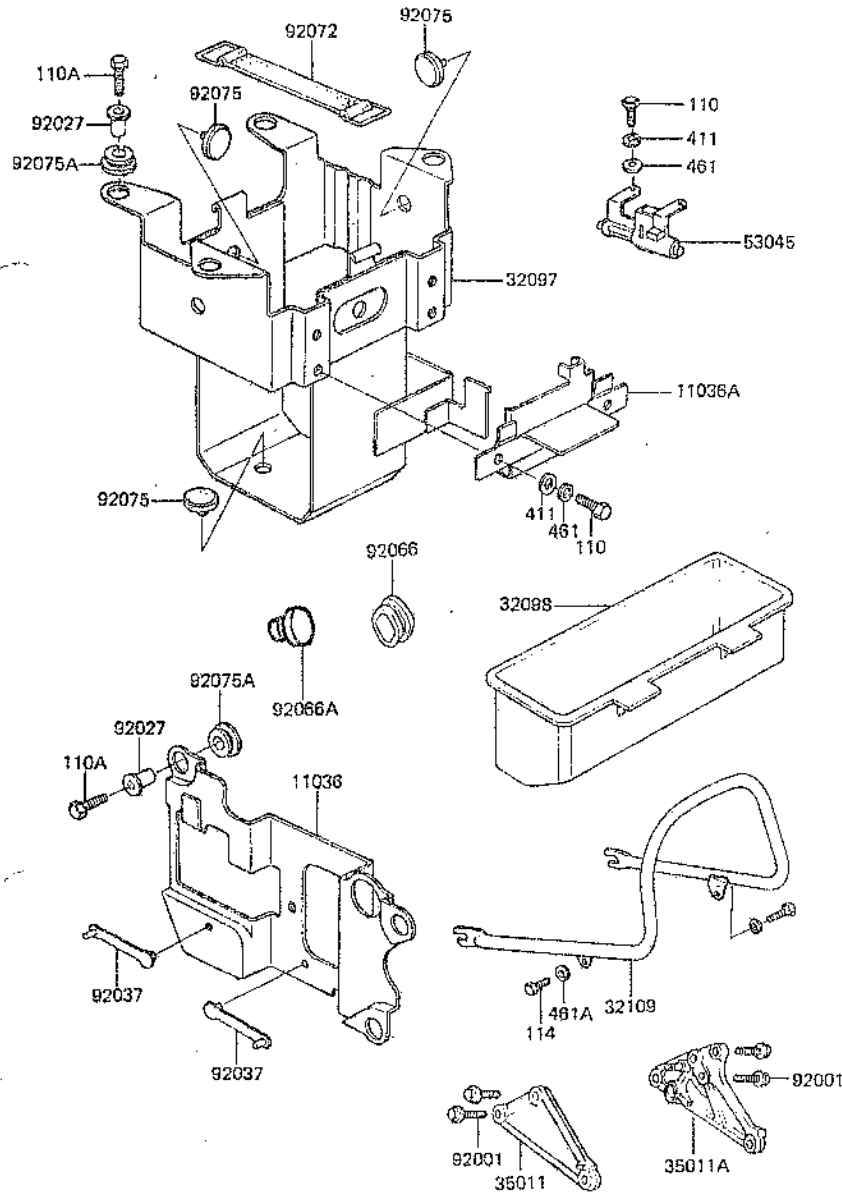
Ref. No.	Part No.	Description	Spec Code	Quantity--	
				82	2750
12046	21170-003	SPROCKET, STARTER CLUTCH		1	
13193	13193-1001	CLUTCH-ASSY-ONEWAY		1	
21039	21039-003	BRUSH, CARBON		2	
21040	21040-003	SPRING-BRUSH		2	
21053	21053-003	SPROCKET-ASSY, STARTING MOTOR		1	
21163	21163-1020	STARTER-ELECTRIC		1	
26011	26010-045	WIRE-LEAD, STARTER MOTOR		1	
27010	21164-005	SWITCH, MAGNETIC		1	
92001	92003-104	BOLT, BX16		3	
92009	21099-005	SCREW, PAN HEAD, 6X120		2	
92015	92017-014	NUT, LOCK, 6MM		2	
92022	21025-011	WASHER, 9.1X18X0.2		4	
92026	92026-1004	SPACER, 25X40X1		1	
92033	92033-034	RING-SNAP, 17MM		1	
92037	21126-U08	CLAMP, WIRING HARNESS		2	
92043	92043-087	PIN		3	
92055	21027-003	RING-O, STARTER MOTOR		1	
92055A	21027-007	RING-O		1	
92057	21070-Q10	CHAIN, GENERATOR, EK518X52L		1	
92071	21017-Q17	GROMMET, STARTER TERMINAL		1	
92075	21064-Q02	DAMPER, MAGNETIC SWITCH		1	
92081	92081-110	SPRING		3	
92122	92122-Q04	ROLLER, 15X13		3	
110	11060625	BOLT, 6X25		2	
312	31280600	NUT-HEX, 6MM		2	
461	461FD600	WASHER-SPRING, 6MM		4	

24 Frame

Ref. No.	Part No.	Description	Spec Code	Quantity-	
				82	Y1
11012	46098-016	CAP, STEERING STEM			1
32002	32002-1470	FRAME-COMP, WG			1
32002A	32002-1471	FRAME-COMP, SW		NG	1
92001	92007-031	BOLT, 16X25.5		UK	1
92015	92090-007	NUT, 30MM			1
92022	46100-003	WASHER, WAVE			1
92022A	92022-230	WASHER, 16X41X4			1
92048	92047-011	RACE, STEERING STEM BEARING			1
92048A	92048-006	RACE, STEERING STEM BEARING			1
92048B	92048-008	RACE, STEERING STEM BEARING			1
600	600A0800	BALL-STEEL, 1/4"			39

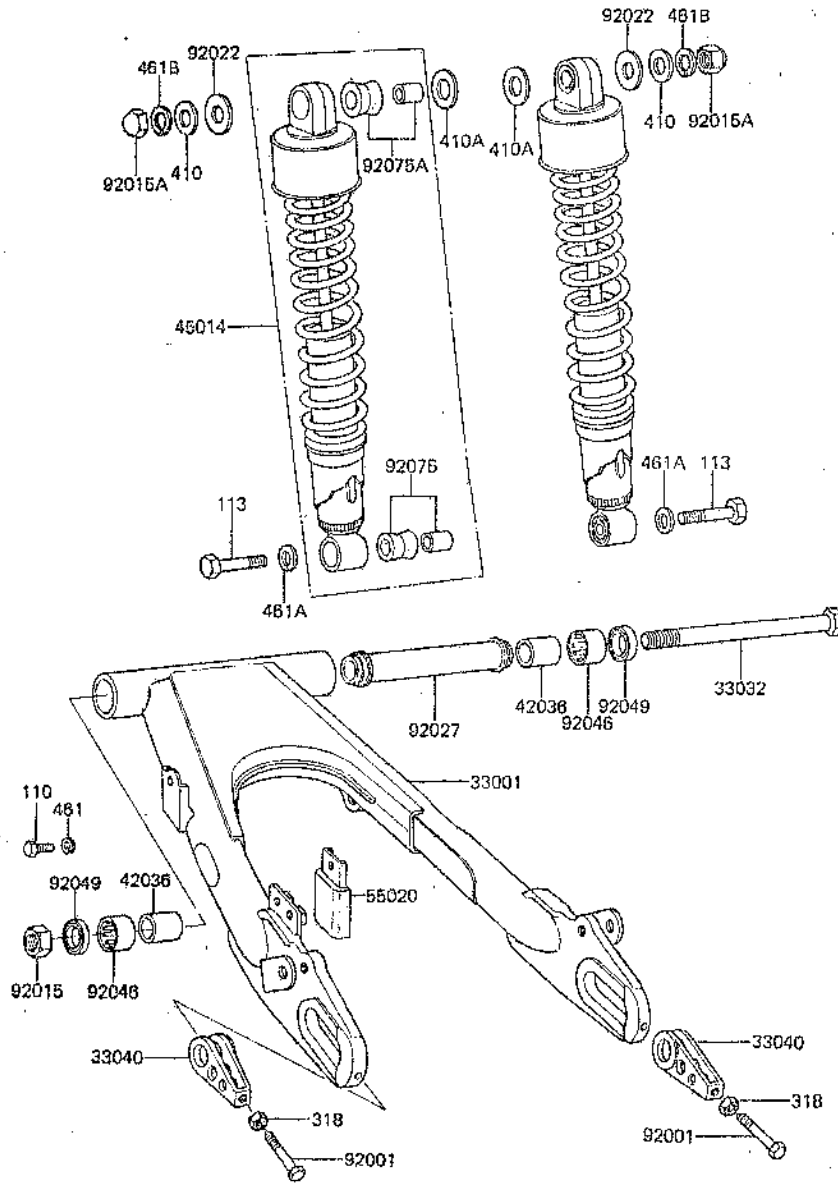


26. Battery Case



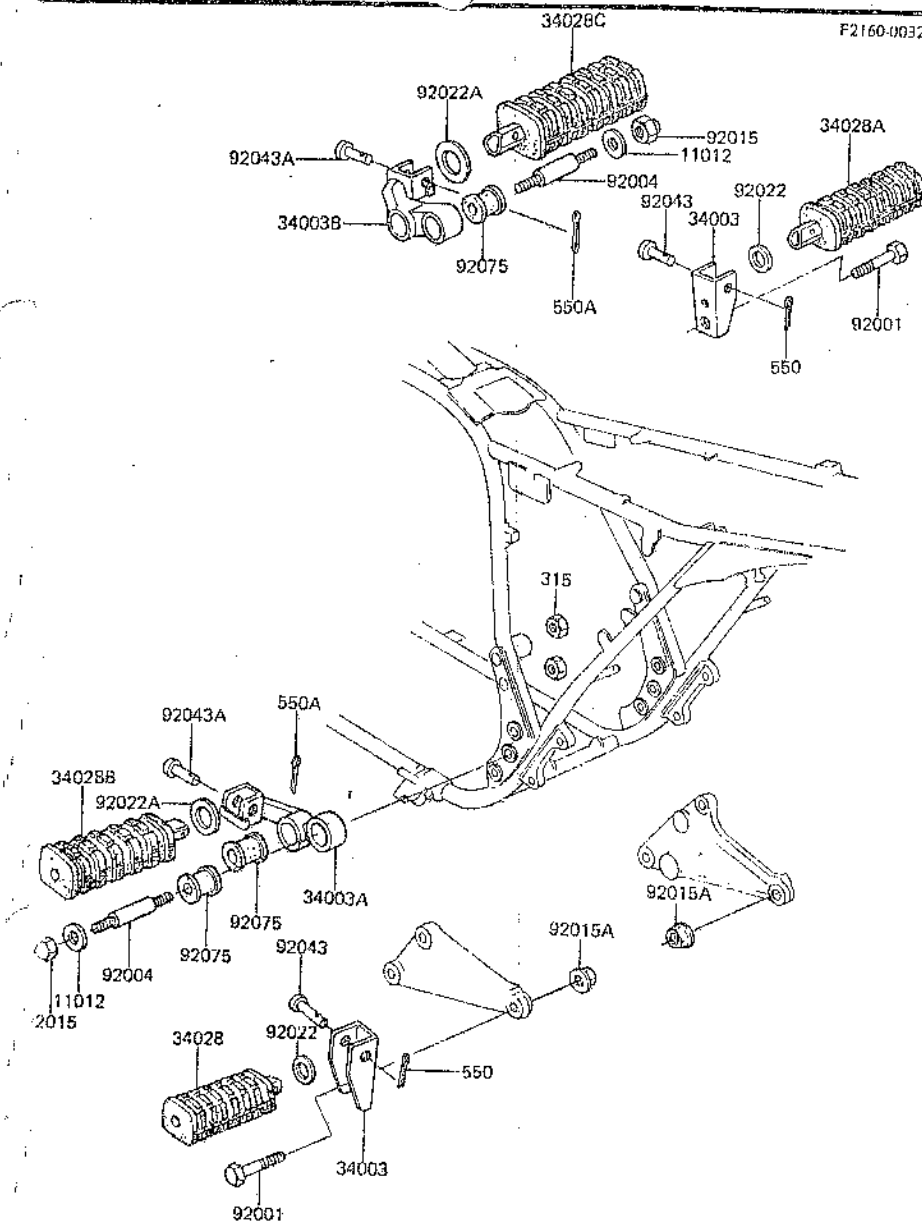
Ref. No.	Part No.	Description	Spec Code	Quantity-	
				82	750
11036	11036-1143	BRACKET-ELECTRIC		1	
11036A	11036-1161	BRACKET-TOOL CASE		1	
32097	32097-1044	CASE-BATTERY		1	
32098	32098-028	CASE-TOOL		1	
32109	32109-1016	GRIP-FRAME		1	
35011	35011-1076	STAY,MUFFLER,LH		1	
35011A	35011-1077	STAY,MUFFLER,RH		1	
53045	53045-1001	HOOK-ASSY,HELMET		1	
92001	92001-1095	BOLT,FLANGED,8X28		4	
92027	92027-194	COLLAR,L=11,1		7	
92037	92037-1290	CLAMP,CARBURETOR		2	
92066	32112-007	PLUG,23X30X4		2	
92066A	92066-1077	PLUG,9.5X8,POLYETHYLENE		1	
92072	92072-071	BAND,BATTERY,L=74		1	
92075	92075-078	DAMPER,RUBBER		6	
92075A	92075-277	DAMPER		7	
110	110B0612	BOLT,6X12		4	
110A	110B0622	BOLT,6X22		7	
114	114B0814	BOLT-SMALL,8X14		2	
411	411B0600	WASHER-PLANE,6MM		4	
461	461F0600	WASHER-SPRING,6MM		11	
461A	461F0800	WASHER-SPRING,8MM		2	

27. Swing Arm, Shock Absorber



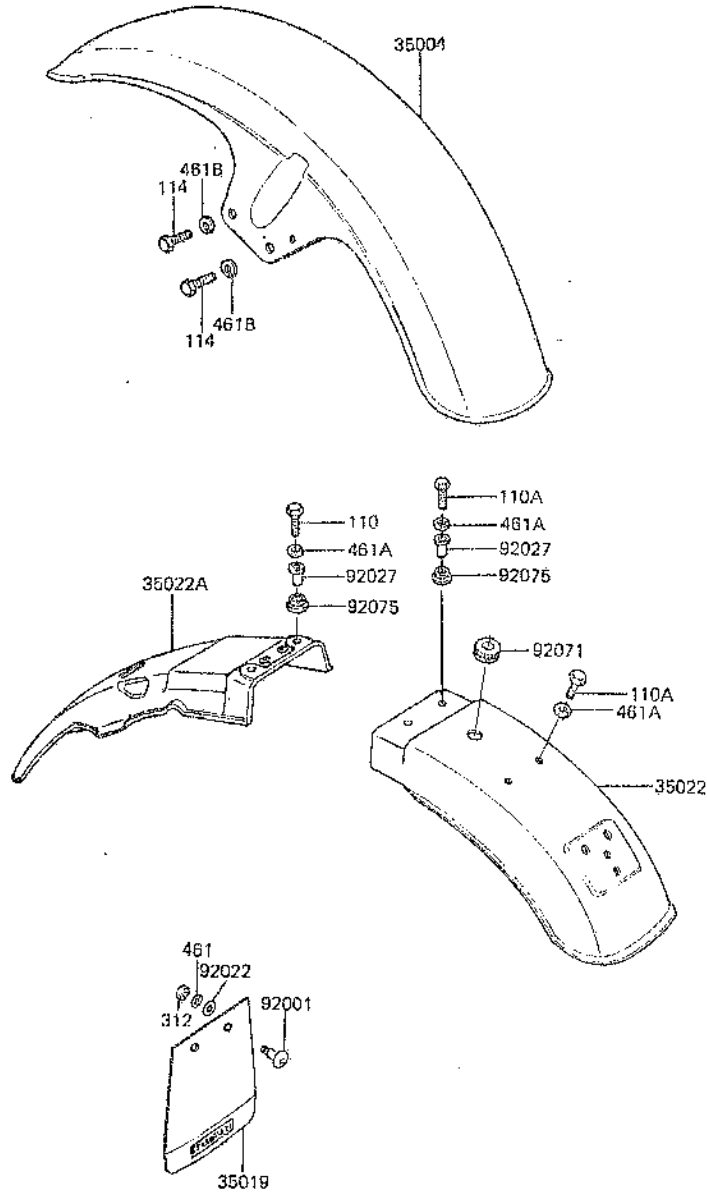
Ref. No.	Part No.	Description	Spec Code	Quantity	
				82	2750
				Y1	
33001	33001-1115	ARM-COMP-SWING			1
33032	33032-047	SHAFT-SWING ARM			1
33040	33040-056	ADJUSTER-CHAIN			2
42036	42036-1040	SLEEVE, SWING ARM			2
45014	45014-1175	SHOCKABSORBER			2
55020	55020-1066	GUARD, CHAIN			1
92001	92001-1399	BOLT, CHAIN ADJUSTER, 8X50			2
92015	92019-012	NUT, LOCK, 16MM			1
92015A	92020-014	NUT, CAP, 12MM			2
92022	92022-1239	WASHER, 12.4X28X2.3			2
92027	92027-1364	COLLAR			1
92046	92046-1035	BEARING-NEEDLE, BHTM2530-1			2
92049	92049-1060	SEAL-OIL, MH25334			2
92075	45017-019	DAMPER, SHOCKABSORBER, LWR			2
92075A	92075-1141	DAMPER, SHOCKABSORBER, UPP			2
110	110B0612	BOLT, 6X12			1
113	113N1035	BOLT-SMALL-FINE, 10X35			2
318	318B0800	NUT-HEX-SMALL, 8MM			2
410	410B1200	WASHER-PLANE-SMALL, 12MM			2
410A	410B1400	WASHER-PLANE-SMALL, 14MM			2
461	461F0600	WASHER-SPRING, 6MM			1
461A	461F1000	WASHER-SPRING, 10MM			2
461B	461F1200	WASHER-SPRING, 12MM			2

F2160-0032



Ref. No.	Part No.	Description	Spec Code	Quantity	
				82	Y1
11012	92102-010	CAP,STEP			4
34003	34003-1025	HOLDER-STEP,RR			2
34003A	34003-1120	HOLDER-STEP,L,H			1
34003B	34003-1121	HOLDER-STEP,R,H			1
34028	34028-1024	STEP,RR,LH			1
34028A	34028-1025	STEP,RR,RH			1
34028B	34028-1026	STEP,FR,LH			1
34028C	34028-1029	STEP,FR,RH			1
92001	92001-1252	BOLT,10X35			2
92004	92004-067	STUD,L=49			4
92015	92015-1133	NUT,CAP,LOCK,8MM			4
92015A	92015-1172	NUT,FLANGED,10MM			2
92022	92022-181	WASHER,22,5X30X2,6			2
92022A	92022-250	WASHER,25X36X2,3			2
92043	92043-079	PIN,6X28			2
92043A	92043-115	PIN,8X35,5			2
92075	92075-140	DAMPER,STEP			4
315	315B1000	NUT-HEX-FINE,10MM			4
550	550D2012	PIN-COTTER,2,0X12			2
550A	550D2515	PIN-COTTER,2,5X15			2

F2170-0123

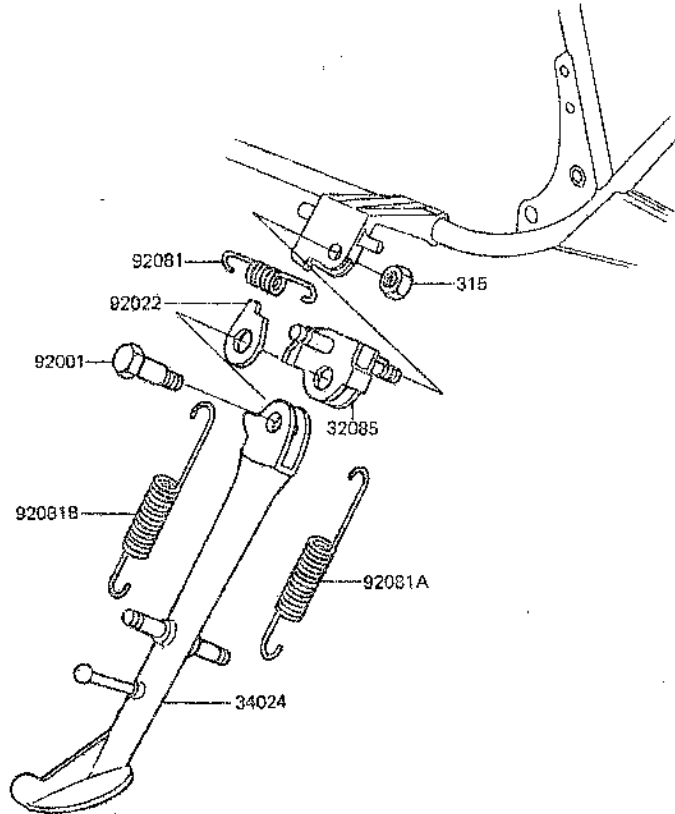


Ref. No.	Part No.	Description	Spec Code	Quantity	
				82	Z750
35004	35004-1047	FENDER-FRONT, CR PLATED		1	
35019	35019-1005	FLAP, FENDER, RR		1	
	(OPTION)				
35022	35022-1061	FENDER-COMP-REAR, RR, CR PLATED		1	
35022A	35022-1087	FENDER-COMP-REAR		1	
92001	92001-134	BOLT, 5X12		2	
	(OPTION)				
92022	92022-104	WASHER, 5.5X20X1.2		2	
	(OPTION)				
92027	92027-194	COLLAR, L=11, 1		4	
92071	92071-099	GROMMET, 13MM		1	
92075	92075-277	DAMPER		4	
110	110B0618	BOLT, 6X18		2	
110A	110B0622	BOLT, 6X22		4	
114	114B0816	BOLT-SMALL, 8X16		4	
312	312B0500A	NUT-HEX, 5MM		2	
	(OPTION)				
461	461F0500	WASHER-SPRING, 5MM		2	
	(OPTION)				
461A	461F0600	WASHER-SPRING, 6MM		6	
461B	461F0800	WASHER-SPRING, 8MM		4	

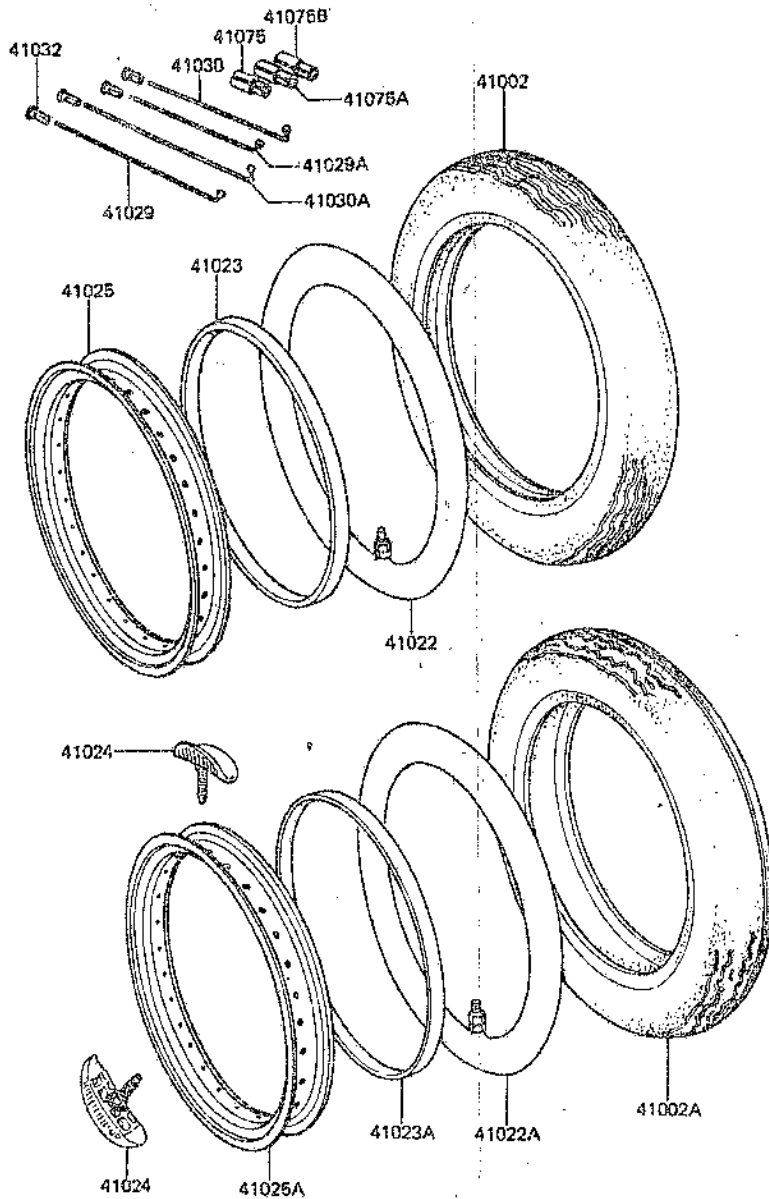
30. Stand

F2190-0080

Ref. No.	Part No.	Description	Spec Code	Quantity-	
				82	Z750
32085	32085-1096	STOPPER, SIDE STAND		1	
34024	34024-1089	STAND-SIDE		1	
92001	92001-1011	BOLT, SIDE STAND		1	
92022	92022-1007	WASHER, LOCK		1	
92081	92081-1010	SPRING, STOPPER RETURN		1	
92081A	92081-1426	SPRING, SIDE STAND		1	
92081B	92081-1470	SPRING, SIDE STAND		1	
315	315D1200A	NUT-HEX-FINE, 12MM		1	

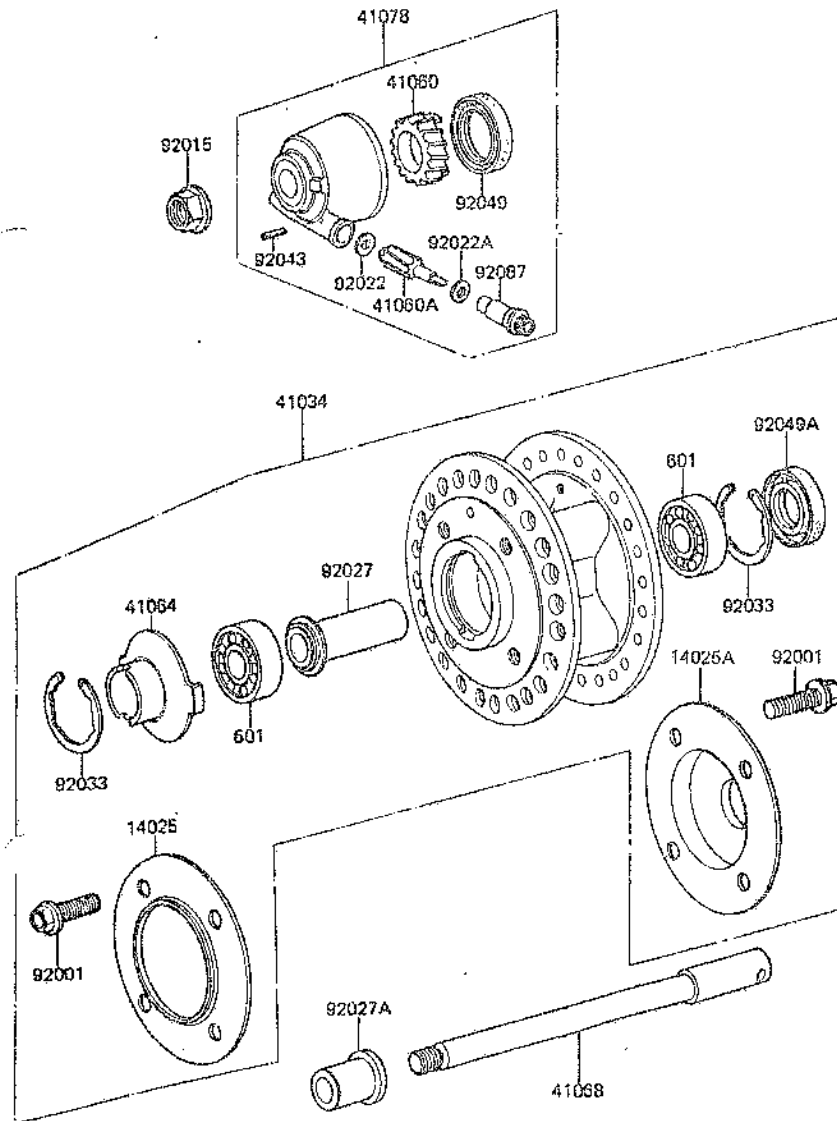


31. Wheel



Ref. No.	Part No.	Description	Spec Code	Quantity-	
				'82	'87
41002	41002-1281	TIRE,3.25-H19 4PR F11 (D)		1	
41002A	41002-1282	TIRE,130/90-16 67H K427 (D)		1	
41022	41022-030	TUBE-TIRE,FR,3.25/3.50-19(D)		1	
41022A	41022-1010	TUBE-TIRE,RR,130/90-16(D)		1	
41023	41023-015	BAND-RIM,FR,2.75/3.50-19(D)		1	
41023A	41023-1023	BAND-RIM,RR,120 & 130/90-16(D)		1	
41024	41024-1004	STOPPER-RIM,3.00(DUNLOP)		2	
41025	41025-1029	RIM,FR,1.85X19		1	
41025A	41025-1030	RIM,RR,3.00X16		1	
41029	41029-1045	SPOKE-INNER,FR,175MMX1000		24	
41029A	41029-1046	SPOKE-INNER,RR,77MMX1060		24	
41030	41030-1040	SPOKE-OUTER,RR,75MMX680		24	
41030A	41030-1041	SPOKE-OUTER,FR,175MMX850		24	
41032	41032-1005	NIPPLE-SPOKE		96	
41075	41075-1007	BALANCER-WHEEL,10G		AR	
41075A	41075-1008	BALANCER-WHEEL,20G		AR	
41075B	41075-1009	BALANCER-WHEEL,30G		AR	

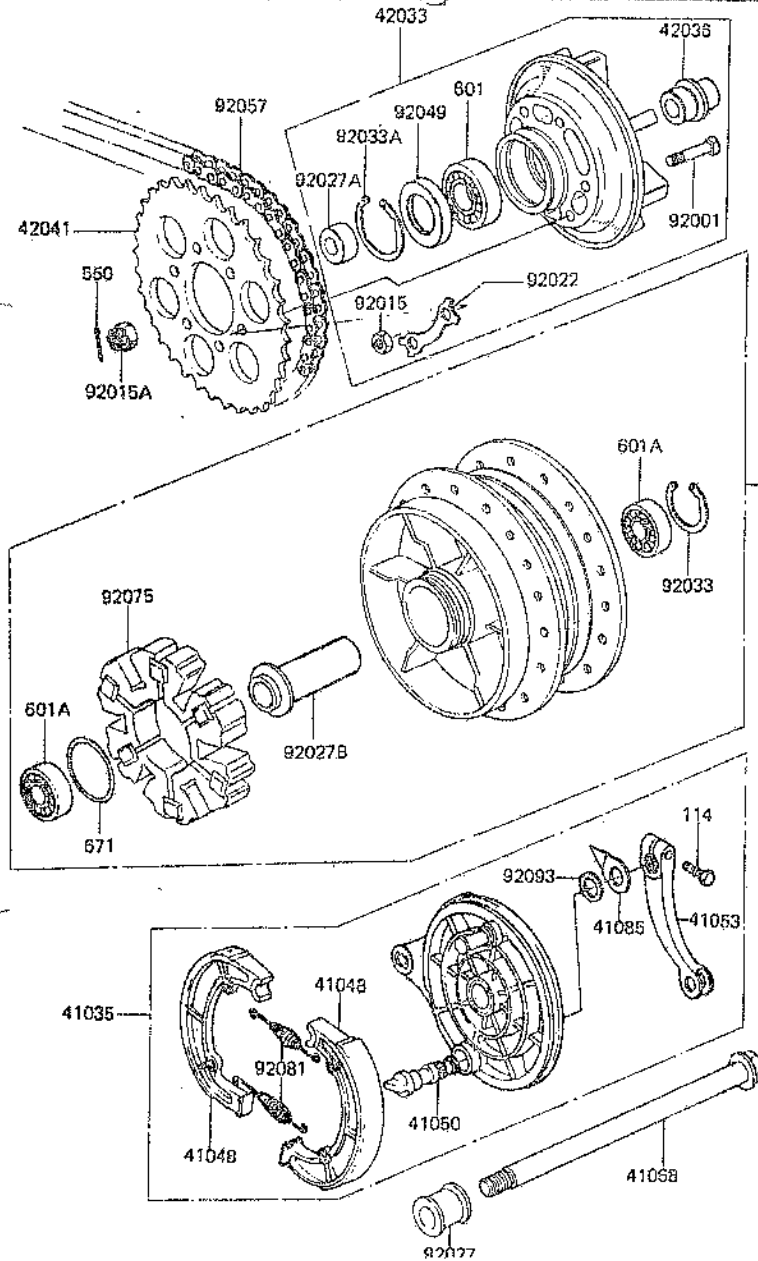
32. Front Hub



Ref. No.	Part No.	Description	Spec Code	Quantity-	
				82	Z7
14025	14025-1277	COVER, DUST, LH		1	
14025A	14025-1278	COVER, DUST, RH		1	
41034	41034-1034	DRUM-ASSY, FR		1	
41060	41059-026	GEAR-METER SCREW, 26T		1	
41060A	41060-1016	GEAR-METER SCREW, 9T		1	
41064	41064-1006	RECEIVER-SPEEDOMETER		1	
41068	41068-1009	AXLE, FR, L=204		1	
41078	41078-1013	CASE-ASSY-METER GEAR		1	
92001	92001-1173	BOLT, FLANGED, 10X30		8	
92015	92015-1032	NUT, FLANGED, 14MM		1	
92022	41063-001	WASHER, 5.1X9X0.4		1	
92022A	92022-1062	WASHER, 5.1X10X1		1	
92027	92027-1223	COLLAR, L=55		1	
92027A	92027-1225	COLLAR, L=30		1	
92033	92033-1041	RING-SNAP, 42MM		2	
92043	41082-001	PIN, SPRING		1	
92049	92049-1057	SEAL-OIL, B/JN30427-C3		1	
92049A	92049-1058	SEAL-OIL, B/JN22425		1	
92087	92087-1002	BUSHING-METER GEAR		1	
601	601863022	BEARING-BALL, #63022C3		2	

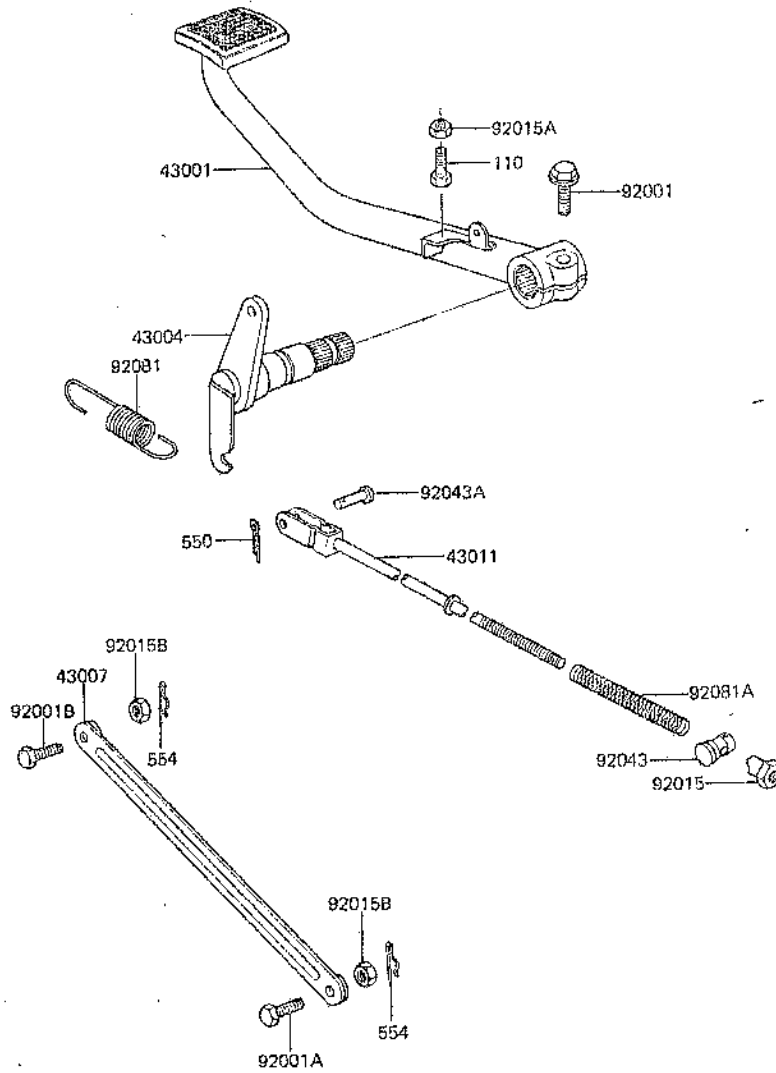
33. R R Hub

F2240-0018



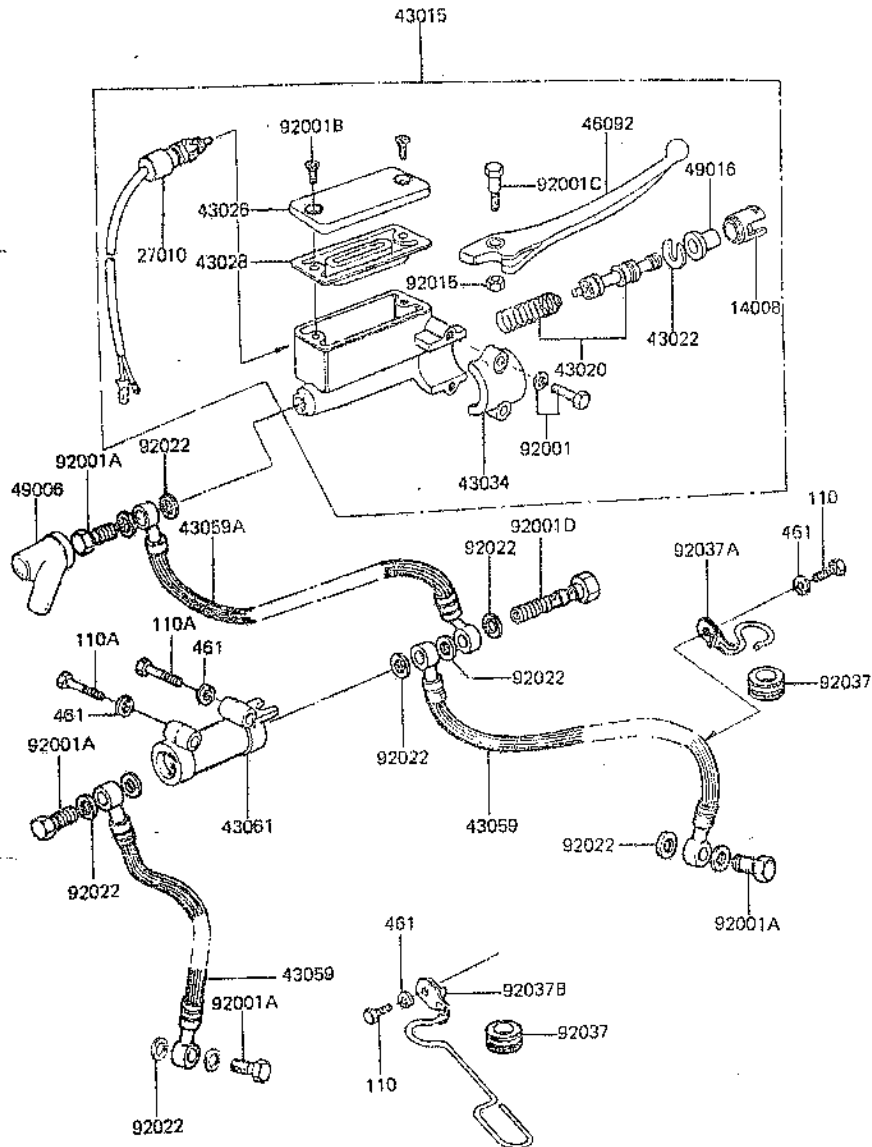
Ref. No.	Part No.	Description	Spec Code	Quantity—	
				82	7750
				Y1	
41034	41034-1029	DRUM-ASSY,RR			1
41035	41035-1056	PANEL-ASSY-BRAKE,RR			1
41048	42019-012	SHOE-BRAKE			2
41050	41050-017	CAM-BRAKE			1
41053	42029-039	LEVER-BRAKE CAM			1
41068	42031-055	AXLE,RR			1
41085	41085-004	INDICATOR,BRAKE SHOE			1
42033	42033-1021	COUPLING-ASSY,RR HUB			1
42036	42036-1036	SLEEVE,RR HUB COUPLING,L=33			1
42041	42041-160	SPROCKET-HUB,38T			1
92001	92001-161	BOLT,10X41			6
92015	42045-005	NUT,10MM			6
92015A	92015-055	NUT,16MM			1
92022	92022-1212	WASHER,LOCK			3
92027	92027-1226	COLLAR,AXLE,RR,RH,L=28			1
92027A	92027-1262	COLLAR,AXLE,RR,LH,L=19.5			1
92027B	92027-1267	COLLAR,RR HUB,L=76			1
92033	92033-1042	RING-SNAP,47MM			1
92033A	92033-1044	RING-SNAP,62MM			1
92049	92050-027	SEAL-OIL,AJM40627			1
92057	92057-1044	CHAIN,DRIVE,EK530SH-0K106L			1
92075	42014-033	DAMPER,RR HUB SHOCK,"1000"			1
92081	41049-012	SPRING,BRAKE SHOE			2
92093	41051-003	SEAL,BRAKE CAM			1
114	11460828	BOLT-SMALL,8X28			1
550	55004035	PIN-COTTER,4.0X35			1
601	601B6206	BEARING-BALL,#6206C3			1
601A	601B630322	BEARING-BALL,#630322C3			2
671	671B2565	O RING,65MM			1

34. Brake Pedal, Torque Rod



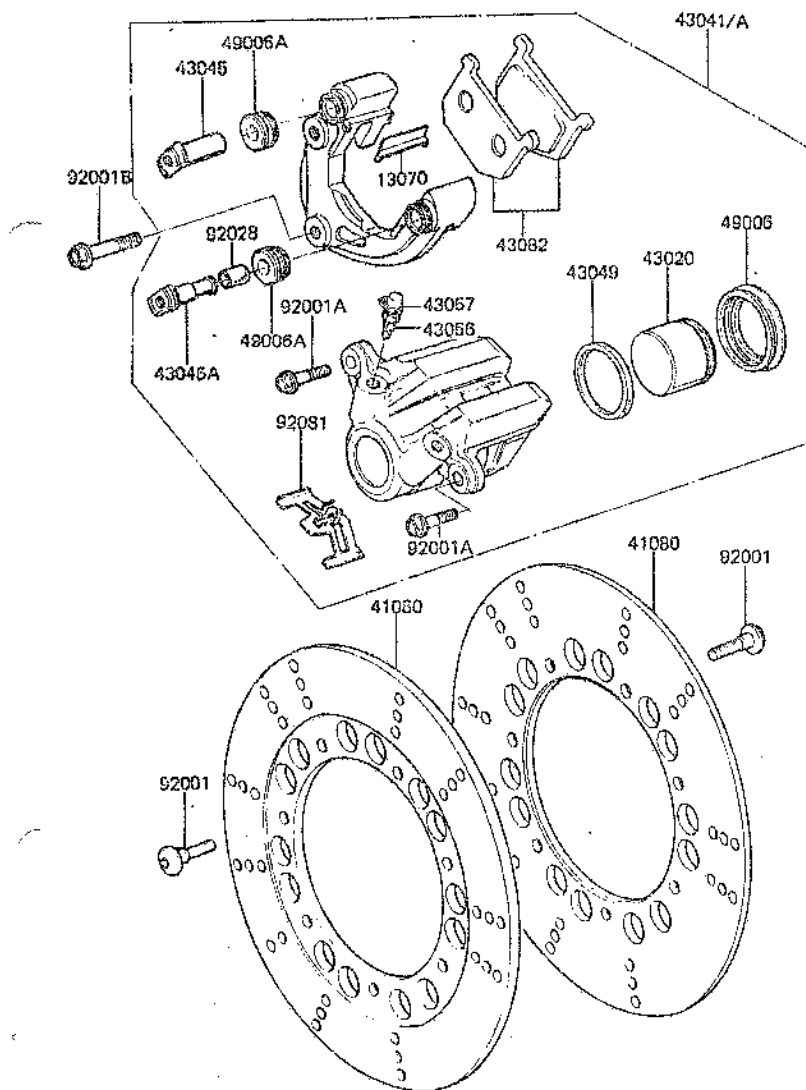
Ref. No.	Part No.	Description	Spec Code	Quantity - Z750	
				'82	'81
43001	43001-1067	LEVER-BRAKE		1	
43004	43004-1027	SHAFT-BRAKE		1	
43007	43007-1016	ROD-TORQUE		1	
43011	43011-1016	ROD-BRAKE		1	
92001	92001-1172	BOLT, FLANGED, 8X25		1	
92001A	92001-1519	BOLT, 10X37		1	
92001B	92003-103	BOLT, TORQUE ROD		1	
92015	92015-042	NUT, 6MM		1	
92015A	92015-1078	NUT, FLANGED, 6MM		1	
92015B	92015-1172	NUT, FLANGED, 10MM		2	
92043	92043-065	PIN, BRAKE ROD		1	
92043A	92043-090	PIN, 6X13		1	
92081	43005-029	SPRING, BRAKE PEDAL		1	
92081A	43012-001	SPRING, BRAKE ROD		1	
110	110B0620	BOLT, 6X20		1	
550	550D2515	PIN-COTTER, 2.5X15		1	
554	554A0800	PIN-SNAP, 8MM		2	

35. Front Master Cylinder



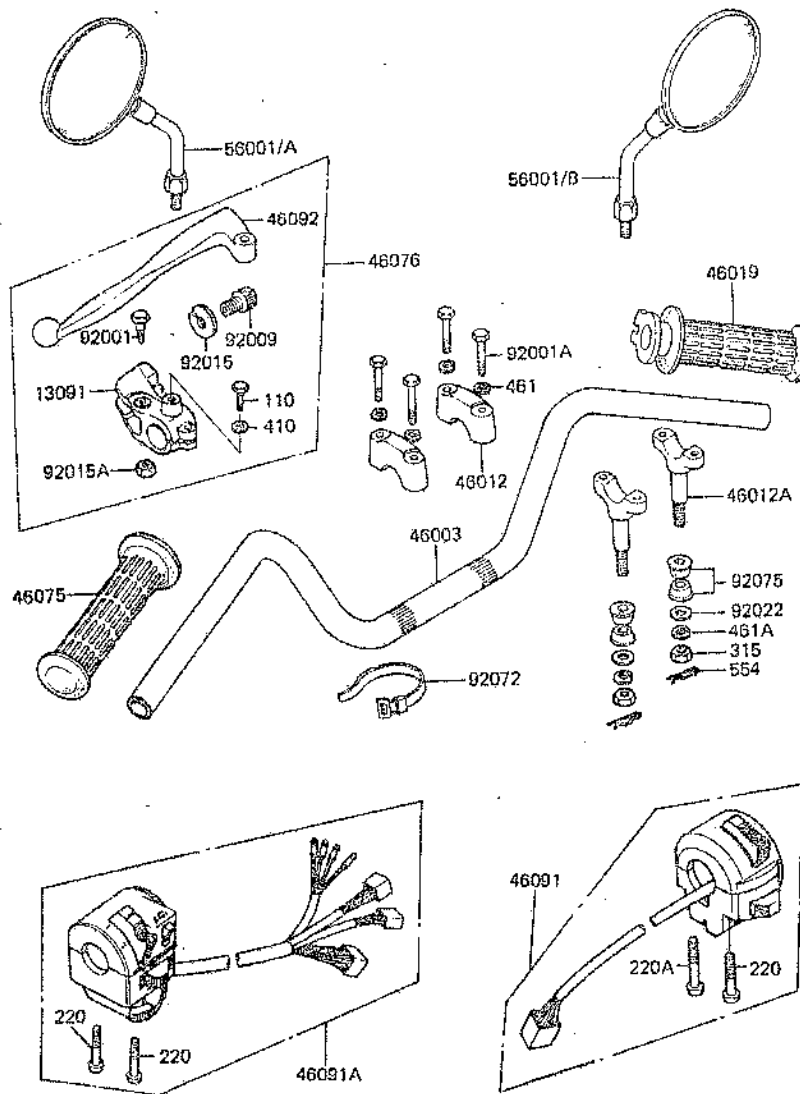
Ref. No.	Part No.	Description	Spec Code	Quantity--	
				'82	Z750
				Y1	
14008	14008-1007	LINER,PISTON		1	
27010	27010-1028	SWITCH,BRAKE		1	
43015	43015-1056	CYLINDER-ASSY-MASTER,FR		1	
43020	43020-1023	PISTON-COMP-BRAKE,FR		1	
43022	43022-1001	STOPPER-BRAKE,PISTON		1	
43026	43026-1007	CAP-BRAKE		1	
43028	43028-1008	DIAPHRAGM,MASTER CYLINDER		1	
43034	43034-1001	HOLDER-BRAKE,MASTER CYLINDER		1	
43059	43059-1105	HOSE-BRAKE,FR,L=600		2	
43059A	43059-1122	HOSE-BRAKE,L=500		1	
43061	43061-1002	JOINT-BRAKE		1	
46092	46092-1012	LEVER-GRIP,FRONT BRAKE		1	
49006	49006-1041	BOOT,DUST		1	
49016	49016-1010	COVER-SEAL,BRAKE PISTON		1	
92001	43033-003	BOLT,6X25,W/WASHER		2	
92001A	43066-001	BOLT,BANJO,10X26		4	
92001B	92001-1055	SCREW-CSK-CROS,5X12,BLACK		2	
92001C	92001-1056	BOLT,FR BRAKE LEVER		1	
92001D	92001-1203	BOLT,BANJO,10X37		1	
92015	43032-002	NUT,6MM		1	
92022	43067-001	WASHER,10,5X15X1.5		11	
92037	43064-006	GROMMET,HOSE CLAMP		2	
92037A	92037-1054	CLAMP,BRAKE HOSE,FR		1	
92037B	92037-1116	CLAMP,CABLE		1	
110	110B0612	BOLT,6X12		2	
110A	110B0640	BOLT,6X40		2	
461	461F0600	WASHER-SPRING,6MM		4	

36. Front Caliper



Ref. No.	Part No.	Description	Spec Code	Quantity-	
				53	Z750
13070	13070-1026	GUIDE, PAD		4	
41080	41080-1040	DISK, FR		2	
43020	43020-1017	PISTON-COMP-BRAKE		2	
43041	43041-1039	CALIPER-ASSY, FR, LH		1	
43041A	43041-1040	CALIPER-ASSY, FR, RH		1	
43045	43045-1007	SHAFT-CALIPER		2	
43045A	43045-1008	SHAFT-CALIPER		2	
43049	43049-002	RING, PISTON SEAL		2	
43056	43056-003	BREATHER-BRAKE		2	
43057	43057-003	CAP-BREATHER		2	
43082	43082-1007	PAD-ASSY-BRAKE		2	
49006	49006-1043	BOOT, PISTON		2	
49006A	49006-1044	BOOT, SHAFT		4	
92001	92001-1294	BOLT, SOCKET, FLANGED, 8X30		14	
92001A	92001-1320	BOLT, FLANGED, 8X25		4	
92001B	92001-1355	BOLT, FLANGED, 10X41		4	
92028	92028-1090	BUSHING, 7.8X11X15.7		2	
92081	92081-1229	SPRING, PAD		2	

37. Handlebar



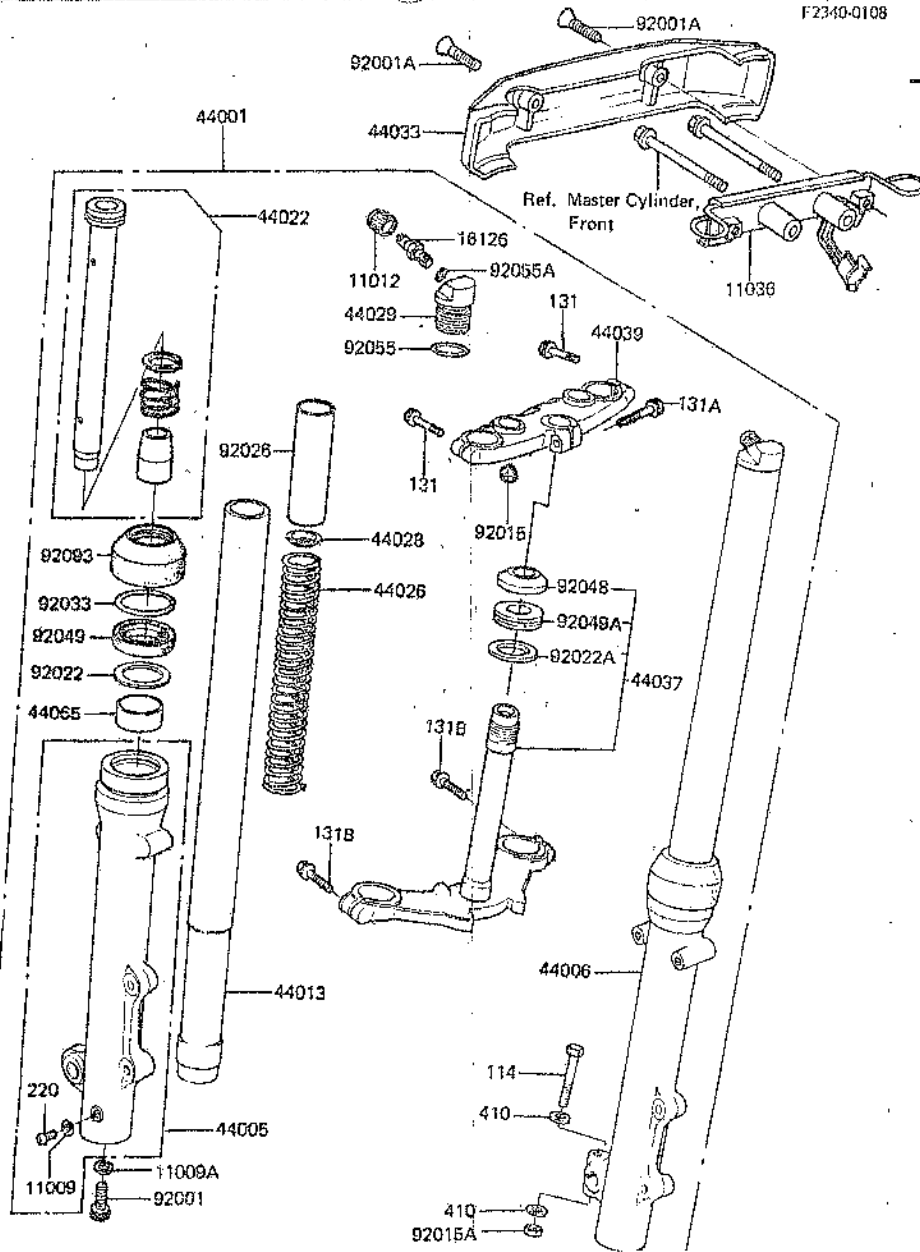
Ref. No.	Part No.	Description	Spec Code	Quantity-	
				'82	'75
13091	13091-1046	HOLDER, CLUTCH LEVER, F, BLACK		1	
46003	46003-1098	HANDLE		1	
46012	46012-008	HOLDER-HANDLE, UPP		2	
46012A	46012-010	HOLDER-HANDLE, LWR		2	
46019	46019-1015	GRIP-ASSY, THROTTLE		1	
46075	46075-1022	GRIP, LH		1	
46076	46076-1019	LEVER-ASSY-GRIP, CLUTCH		1	
46091	46091-1157	HOUSING-ASSY-CONTROL, RH		1	
46091A	46091-1216	HOUSING-ASSY-CONTROL, LH		1	
46092	46092-1005	LEVER-GRIP, CLUTCH		1	
56001	56001-1062	MIRROR-ASSY			

			UK	2	
56001A	56001-1119	MIRROR-ASSY, LH			

			WG	1	
56001B	56001-1120	MIRROR-ASSY, RH			

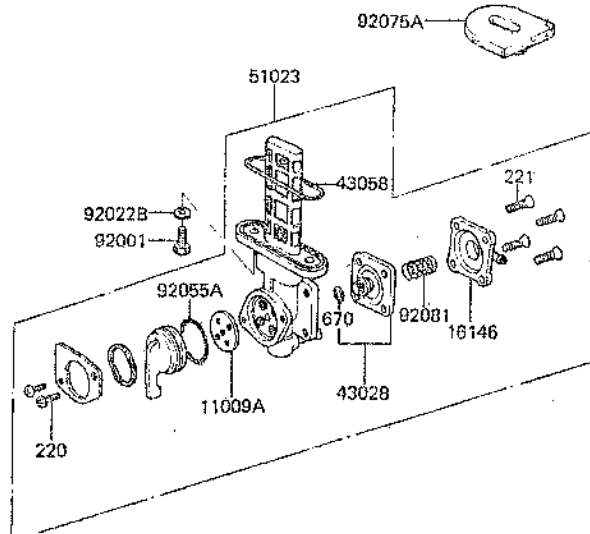
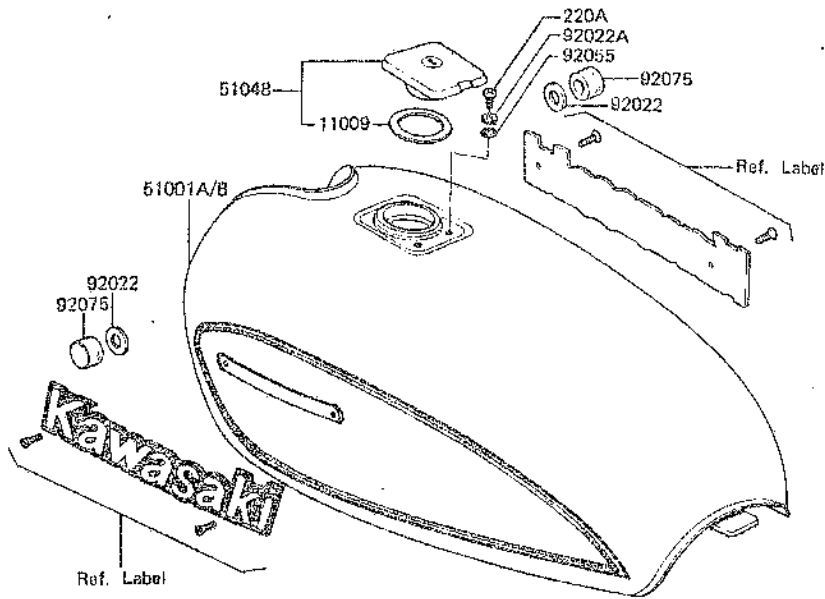
			WG	1	
92001	92001-1075	BOLT, CLUTCH LEVER		1	
92001A	92001-1405	BOLT, 8X38		4	
92009	46055-003	SCREW, CABLE ADJUST, 8MM		1	
92015	46056-005	NUT, CABLE ADJUST LOCK		1	
92015A	92019-008	NUT, LOCK, 6MM		1	
92022	92022-196	WASHER, 10, 5X30X2		2	
92072	92072-030	BAND, L=125		4	
92075	92075-275	DAMPER, HANDLE		4	
110	110N0622	BOLT, 6X22		1	
220	220B0535A	SCREW-PAN-CROS, 5X35		1	
220A	220B0540A	SCREW-PAN-CROS, 5X40		1	
315	315B1000	NUT-HEX-FINE, 10MM		2	
410	410B0600	WASHER-PLANE-SMALL, 6MM		1	
461	461F0800	WASHER-SPRING, 8MM		4	
461A	461F1000	WASHER-SPRING, 10MM		2	
554	554A0800	PIN-SNAP, 8MM		2	

F2340-0108



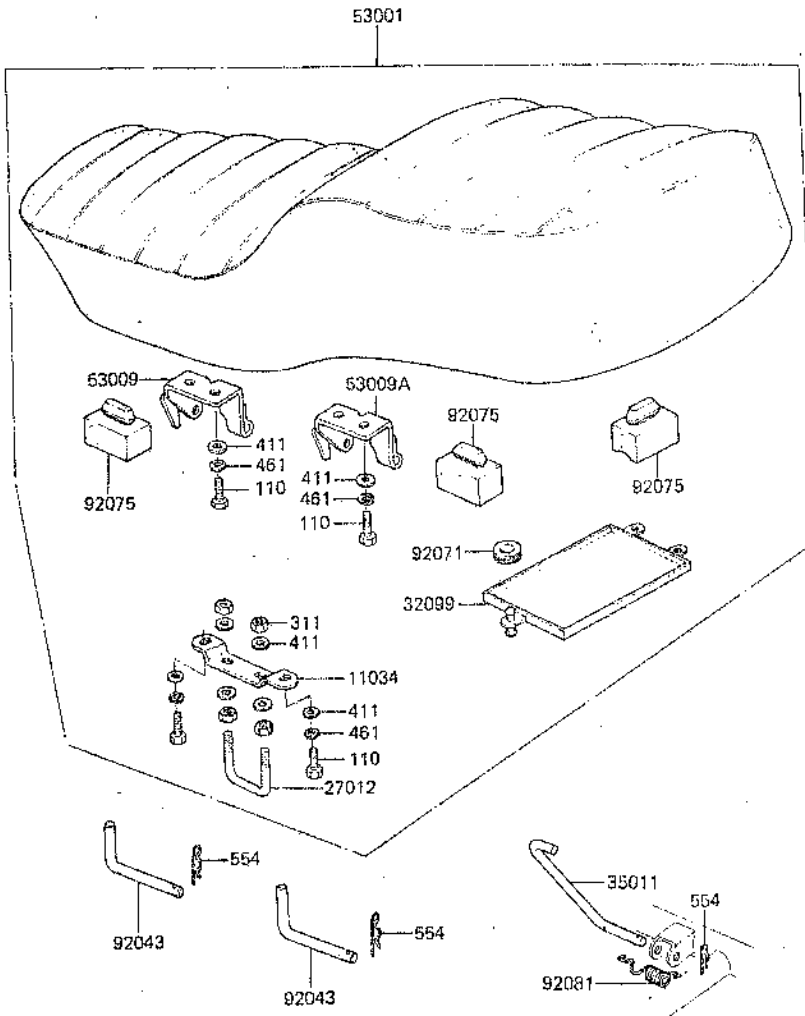
Ref. No.	Part No.	Description	Spec Code	Quantity-	
				23	Y1
11009	44045-002	GASKET, FORK DRAIN PLUG		2	
11009A	44045-057	GASKET, FORK CYLINDER		2	
11012	11012-1241	CAP, AIR VALVE		2	
11036	11036-1253	BRACKET-A, FORK COVER		1	
16126	16126-1046	VALVE, AIR		2	
44001	44001-1356	FORK-FRONT		1	
44005	44005-1082	PIPE-LEFT FORK OUTER		1	
44006	44006-1082	PIPE-RIGHT FORK OUTER		1	
44013	44013-1072	PIPE-FORK INNER		2	
44022	44022-1066	CYLINDER-FORK		2	
44026	44026-1122	SPRING-FRONT FORK		2	
44028	44028-033	GUIDE-FORK SPRING		2	
44029	44029-1029	SEAT-FORK SPRING		2	
44033	44033-1054	COVER-FORK		1	
44037	44037-1092	HOLDER-FORK UNDER		1	
44039	44039-1047	HOLDER-FORK UPPER		1	
44065	44065-1016	BUSHING-FRONT FORK		2	
92001	44041-040	BOLT, SOCKET, FORK CYLINDER		2	
92001A	92001-1323	SCREW-CSK-RD-CROS, 5X18		2	
92015	92015-1022	NUT, FLANGED, 8MM		1	
92015A	92015-1124	NUT, LOCK, 8MM		1	
92022	92022-1275	WASHER, FRONT FORK		2	
92022A	92022-231	WASHER, 30, 5X50X0.6		2	
92026	92026-1012	SPACER, FORK SPRING		2	
92033	44044-012	RING-SNAP		2	
92048	92047-012	RACE, STEERING STEM BEARING		2	
92049	92049-1055	SEAL-OIL, FORK		2	
92049A	92056-003	SEAL-OIL, STEERING STEM		2	
92055	92055-1012	RING-O, FORK TOP		2	
92055A	92055-1094	RING-O, AIR VALVE		2	
92093	92093-1037	SEAL, FORK		2	
114	114G0855	BOLT-SMALL, 8X55		1	
131	131G0845	BOLT-FLANGED, 8X45		2	
131A	131G0855	BOLT-FLANGED, 8X55		1	
131B	131G1040	BOLT-FLANGED, 10X40		2	
220	220B0408A	SCREW-PAN-CROS, 4X8		2	
410	410B0800	WASHER-PLANE-SMALL, 8MM		2	

39. Fuel Tank



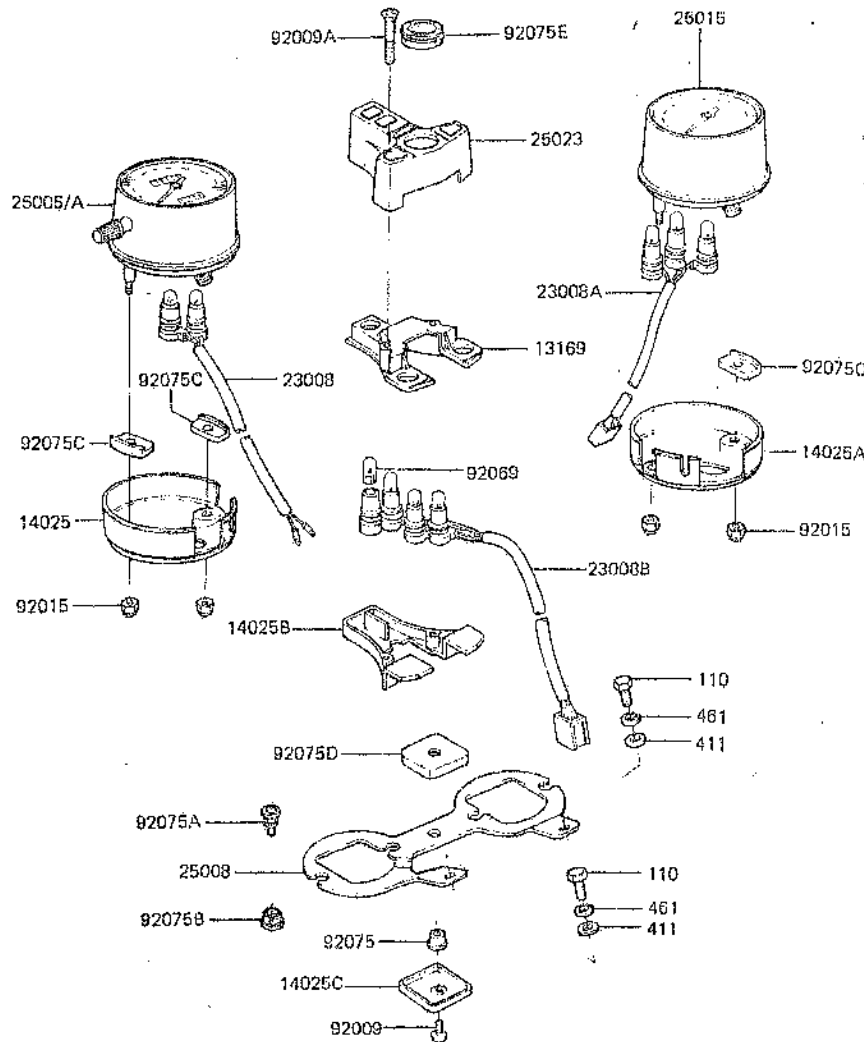
Ref. No.	Part No.	Description	Spec Code	Quantity~	
				52	Y1
11009	11009-1051	GASKET,FUEL TANK CAP		1	
11009A	11009-1188	GASKET,TAP VALVE		1	
16146	16146-1009	COVER-ASSY,TAP DIAPHRAGM		1	
43028	43028-1021	DIAPHRAGM,TAP		1	
43058	51039-003	RING-TAP FLANGED		1	
51001A	51001-5174-E2	TANK-COMP-FUEL,L.M RED		1	
51001B	51001-5175-86	TANK-COMP-FUEL,EBONY		1	
51023	51023-1030	TAP-ASSY,FUEL		1	
51048	51048-1018	CAP-ASSY-TANK		1	
92001	92001-1091	BOLT,6X20		2	
92022	92022-044	WASHER,10.5X26X2.3		2	
92022A	92022-1038	WASHER,5.3X10X0.8		2	
92022B	92022-163	WASHER,6.2X11X1.5		2	
92055	92055-1023	RING-O		2	
92055A	92055-1085	RING-O,TAP LEVER		1	
92075	92075-125	DAMPER,FUEL TANK		2	
92075A	92075-295	DAMPER,FUEL TANK		1	
92081	92081-1240	SPRING,TAP DIAPHRAGM		1	
220	22080308A	SCREW-PAN-CROS,3X8		2	
220A	22080510A	SCREW-PAN-CROS,5X10		2	
221	22180434A	SCREW-CSK-CROS,4X14		4	
670	67081504	O RING,4MM		1	

40. Seat



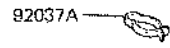
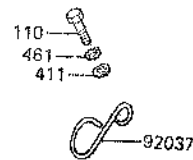
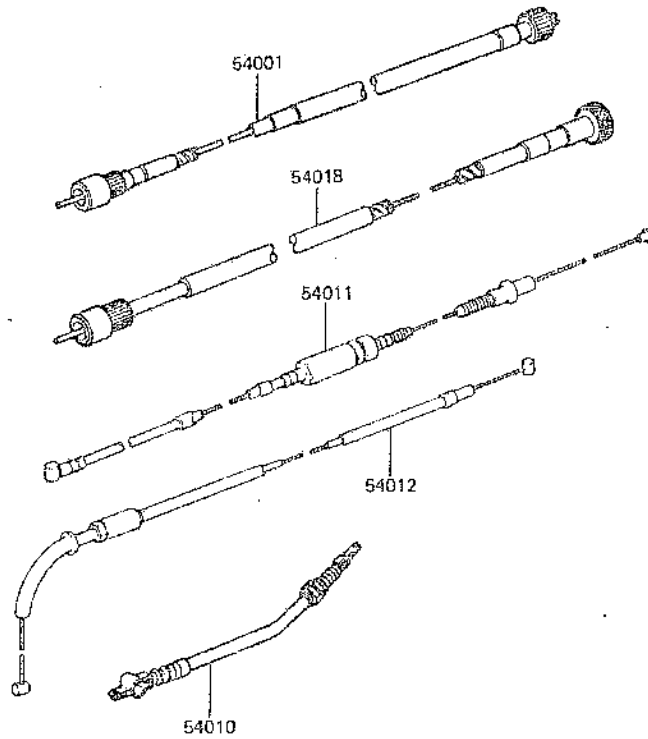
Ref. No.	Part No.	Description	Spec Code	Quantity	
				82	Y1
11034	11034-1329	BRACKET, SEAT CATCH			1
27012	53056-002	HOOK, SEAT			1
32099	32099-011	CASE, MANUAL			1
35011	35011-1034	STAY, SEAT STAND			1
53001	53001-1163	SEAT-ASSY			1
53009	53009-1031	HINGE			1
53009A	53009-1033	HINGE, SEAT			1
92043	92043-1021	PIN, SEAT PIVOT			2
92071	92071-056	GROMMET			1
92075	92075-099	DAMPER, SEAT			5
92081	92081-1053	SPRING, SEAT HOOK			1
110	110B0614	BOLT, 6X14			6
311	311B0600	NUT-HEX, 6MM			4
411	411B0600	WASHER-PLANE, 6MM			6
461	461F0600	WASHER-SPRING, 6MM			6
554	554A0600	PIN-SNAP			3

41. Meter



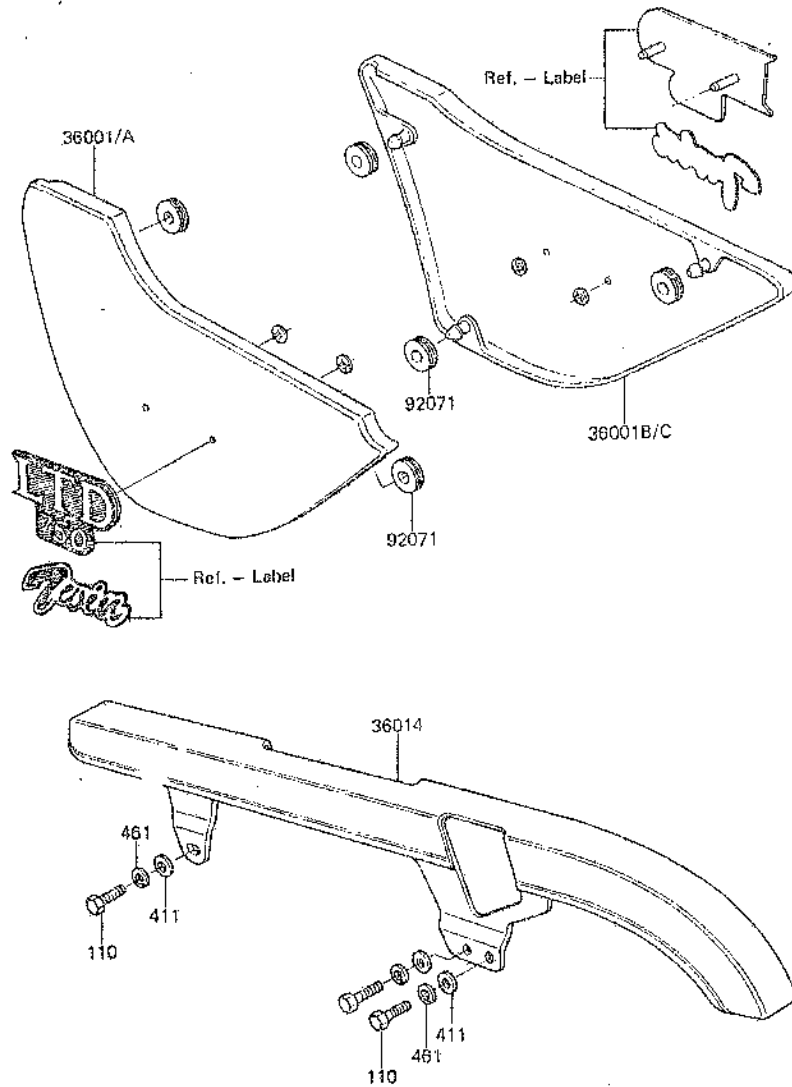
Ref. No.	Part No.	Description	Spec Code	Quantity-	
				82	Y1
13169	13169-1268	PLATE, SOCKET			1
14025	14025-1224	COVER, SPEEDOMETER			1
14025A	14025-1225	COVER, TACHOMETER			1
14025B	14025-1226	COVER, PILOT BOX, LWR			1
14025C	14025-1227	COVER, METER BRACKET			1
23008	23008-1105	SOCKET-ASSY, SPEEDOMETER			1
23008A	23008-1106	SOCKET-ASSY, TACHOMETER			1
23008B	23008-1107	SOCKET-ASSY, PILOT BOX			1
25005	25005-1145	SPEEDOMETER, KPH			1
25005A	25005-1174	SPEEDOMETER, MPH	WG		1
			UK		1
25008	25008-1030	BRACKET-METER			1
25015	25015-1117	TACHOMETER, 1000R/MIN			1
25023	25023-1021	COVER, PILOT BOX, UPP			1
92009	92009-1040	SCREW, TAPPING, 4X10			1
92009A	92009-1093	SCREW-CSK-RD-CROSS, 4X35, BLACK			2
92015	92020-017	NUT, CAP, 5MM			4
92069	92069-1007	BULB, 12V 3.4W			9
92075	25019-023	DAMPER, METER			1
92075A	92075-1149	DAMPER, METER			2
92075B	92075-1150	DAMPER, METER FITTING			4
92075C	92075-1192	DAMPER, METER			1
92075D	92075-1255	DAMPER, PILOT BOX			1
92075E	92075-1256	DAMPER, PILOT BOX			1
110	11080614	BOLT, 8X14			2
411	611B0600	WASHER-PLANE, 6MM			2
461	661F0600	WASHER-SPRING, 6MM			2

42. Cable



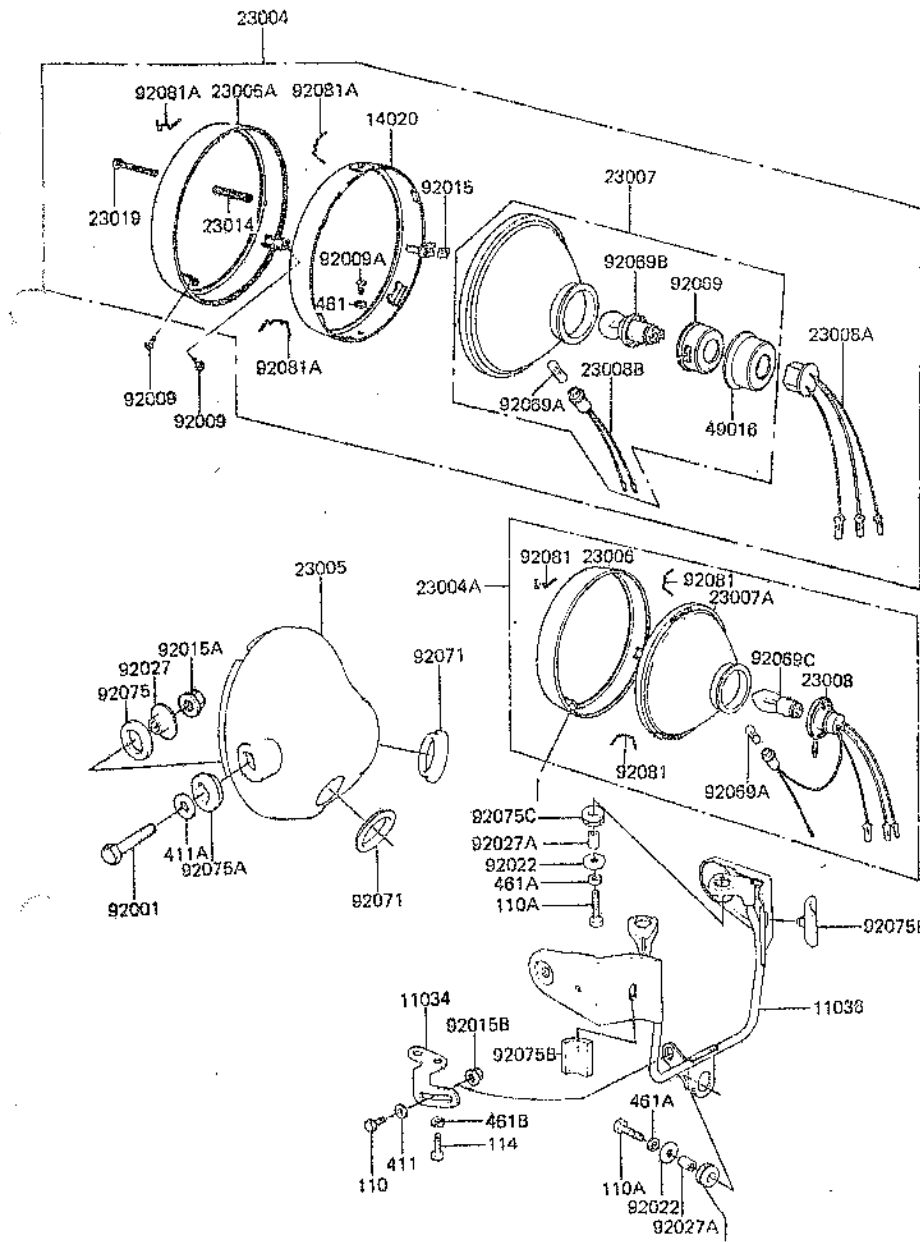
Ref. No.	Part No.	Description	Spec Code	Quantity-	
				02	Y1
54001	54001-1029	CABLE-SPEEDOMETER		1	
54010	54010-1001	CABLE/SIDE STAND SW		1	
54011	54011-1029	CABLE-CLUTCH		1	
54012	54012-1103	CABLE-THROTTLE		1	
54018	54018-1015	CABLE-TACHOMETER		1	
92037	92037-093	CLAMP,CABLE		2	
92037A	92037-1337	CLAMP		1	
	110	BOLT,6X16		1	
	411	WASHER-PLANE,6MM		1	
	461	WASHER-SPRING,6MM		1	

43. Side Cover



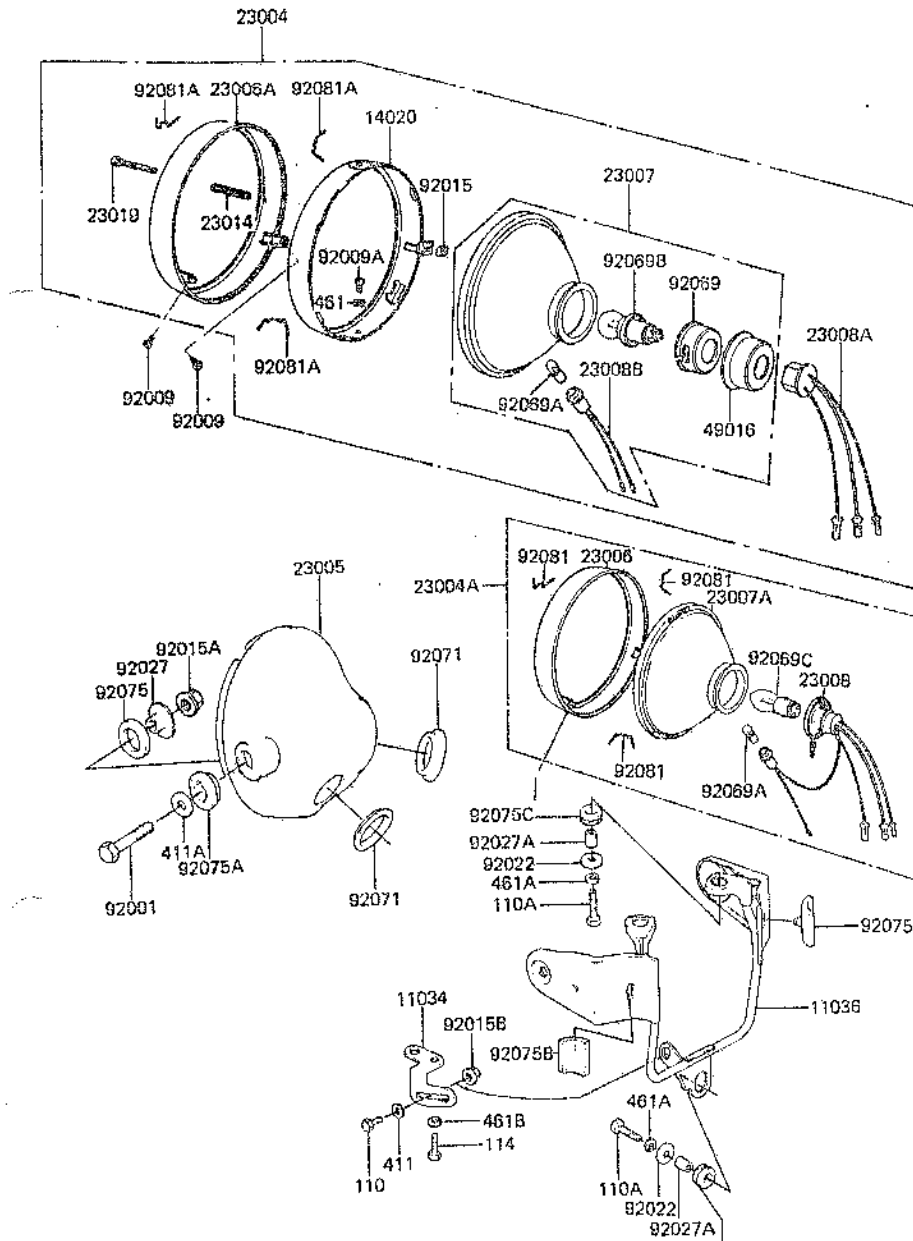
Ref. No.	Part No.	Description	Spec Code	Quantity - 2	
				02	Y1
36001	36001-1135-E2	COVER-SIDE,L.H L.M RED			1
36001A	36001-1135-86	COVER-SIDE,L.H EBONY			1
36001B	36001-1136-E2	COVER-SIDE,R.H L.M RED			1
36001C	36001-1136-86	COVER-SIDE,R.H EBONY			1
36014	36014-1039	CASE-CHAIN			1
92071	92071-056	GROMMET			6
110	110B0616	BOLT,6X16			3
411	411B0600	WASHER-PLANE,6MM			3
461	461F0600	WASHER-SPRING,6MM			3

44. Head Lamp



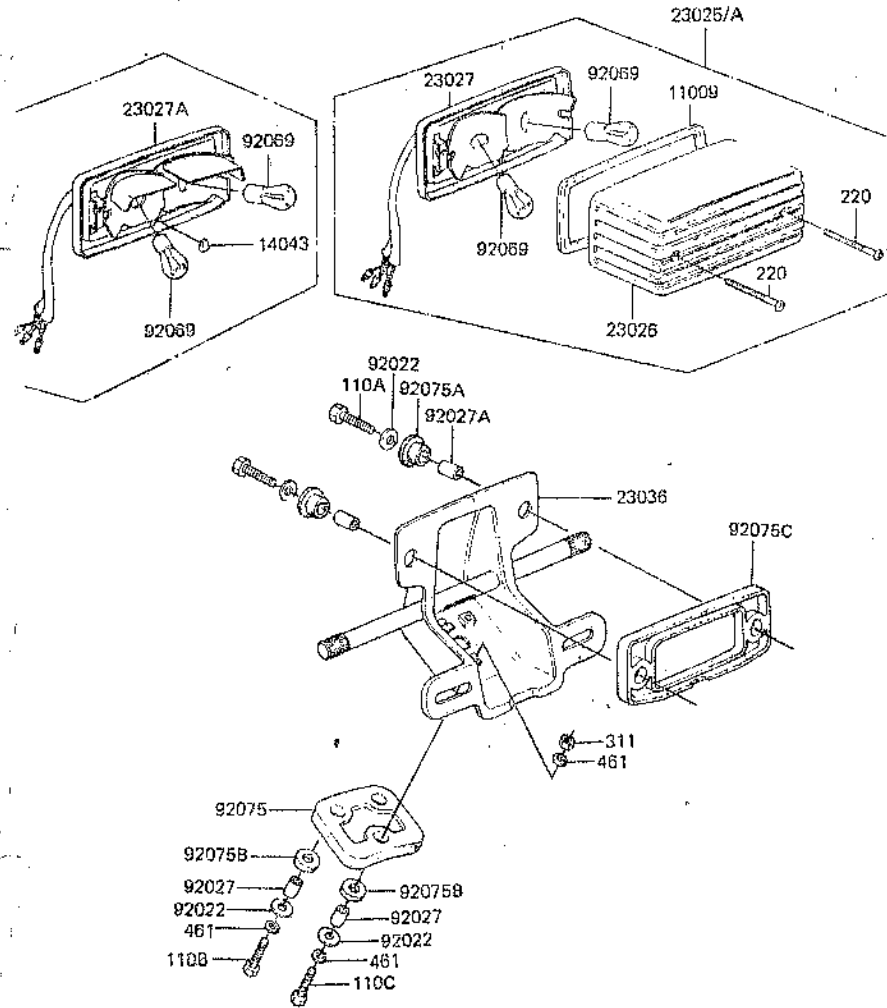
Ref. No.	Part No.	Description	Spec Code	Quantity-	
				'82	'81
11034	11034-1792	BRACKET, HEAD LAMP			1
11036	11036-1485	BRACKET-A, HEAD LAMP			1
14020	23072-004	RETAINER, HEAD LAMP			1
23004	23004-058	LAMP-HEAD	WG		1
23004A	23004-066	LAMP-HEAD	WG		1
23005	23005-1016	BODY-COMP-HEAD LAMP, CR PLATED			1
23006	23006-031	RIM-LAMP	UK		1
23006A	23006-045	RIM-LAMP	WG		1
23007	23007-062	LENS-COMP, "110-11127" MARK	WG		1
23007A	23007-067	LENS-COMP, "001-1367" MARK	UK		1
23008	23008-032	SOCKET-ASSY, HEAD LAMP	UK		1
23008A	23008-044	SOCKET-ASSY, HEAD LAMP	WG		1
23008B	23008-046	SOCKET-ASSY, HEAD LAMP	WG		1
23014	23014-010	SPRING	WG		1
23019	23019-029	SCREW	WG		1
49016	23086-001	COVER, SOCKET	WG		1
92001	92007-024	BOLT, 10X35			2
92009	23019-022	SCREW, SPECIAL, 5X14			2
92009A	23019-028	SCREW, PAN HEAD, 5X6	WG		2
92015	23020-012	NUT, ADJUSTING	WG		1
92015A	92015-1172	NUT, FLANGED, 10MM			2
92015B	92015-1193	NUT, FLANGED, 6MM			1
92022	92022-125	WASHER, 6, 5X20X1, 6			3
92027	23052-011	COLLAR, HEAD LAMP			2
92027A	92027-162	COLLAR, 6, 8X10X12			3
92069	23086-001	HOLDER, BULB SOCKET	WG		1

4-1. Head Lamp



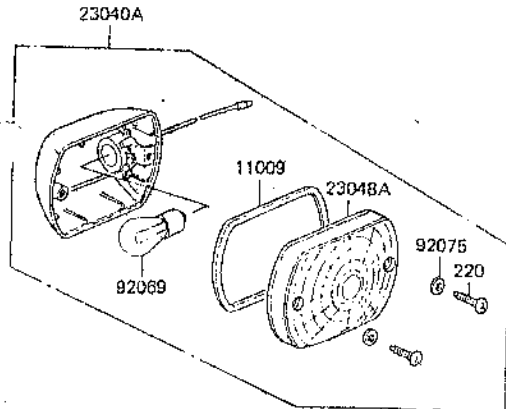
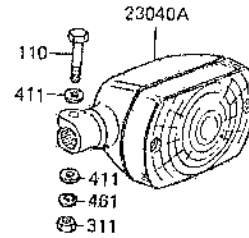
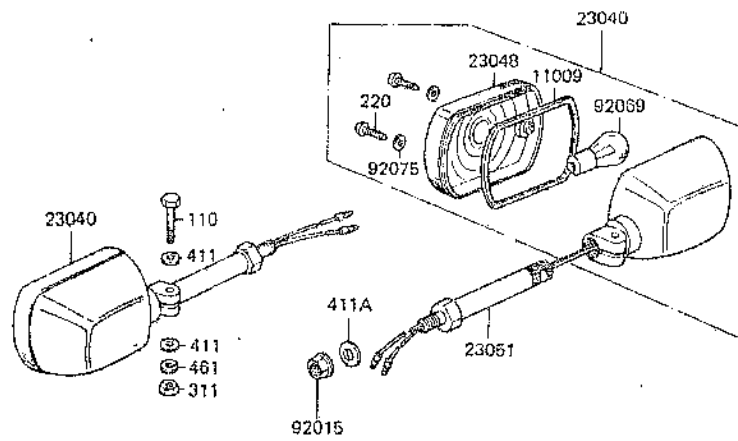
Ref. No.	Part No.	Description	Spec Code	Quantity--	
				'82	'81
92069A		BULB, 12V 4W		1	
		(LOCAL PROCUREMENT ITEM)			
92069B		BULB, 12V 45/40W			
		(LOCAL PROCUREMENT ITEM)	WG	1	
92069C		BULB			
		(LOCAL PROCUREMENT ITEM)	UK	1	
92071	92071-1008	GROMMET		2	
92075	23066-021	DAMPER		2	
92075A	23066-022	DAMPER		2	
92075B	92075-1243	DAMPER		2	
92075C	92075-209	DAMPER		3	
92081	23009-012	SPRING, HEAD LAMP LENS			
		(LOCAL PROCUREMENT ITEM)	UK	4	
92081A	23009-017	SPRING, HEAD LAMP RIM			
		(LOCAL PROCUREMENT ITEM)	WG	3	
110	110B0614	BOLT, 6X14		1	
110A	110B0625	BOLT, 6X25		3	
114	114B0816	BOLT-SMALL, 8X16		1	
411	411B0600	WASHER-PLANE, 6MM		1	
411A	411D1000	WASHER-PLANE, 10MM		2	
461	461F0500	WASHER-SPRING, 5MM			
		(LOCAL PROCUREMENT ITEM)	WG	2	
461A	461F0600	WASHER-SPRING, 6MM		3	
461B	461F0800	WASHER-SPRING, 8MM		1	

45. Tail Lamp



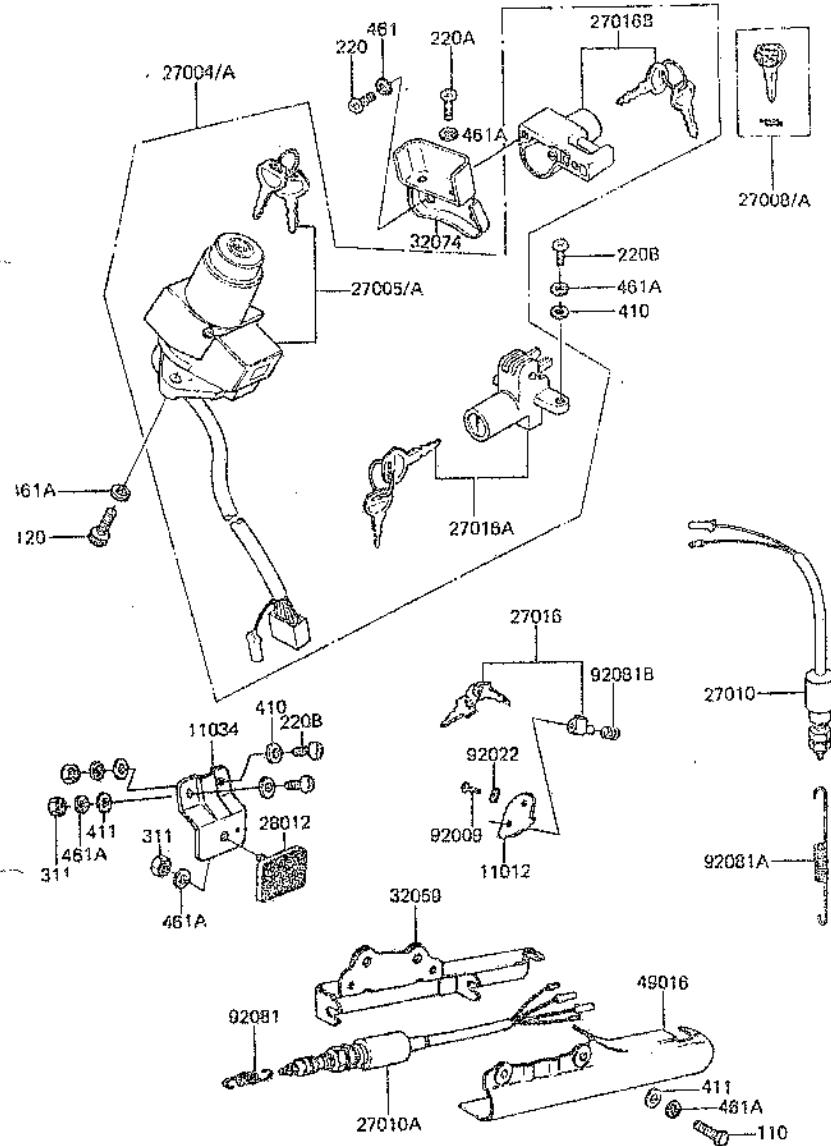
Ref. No.	Part No.	Description	Spec Code	Quantity-	
				B2	Z7
11009	11009-1221	GASKET, TAIL LAMP			1
14043	14043-1004	FILTER			
23025	23025-1026	LAMP-TAIL, "220-40887" MARK	WG		1
23025A	23025-1027	LAMP-TAIL, "220-40887" MARK	UK		1
23026	23026-1017	LENS, TAIL LAMP, DGM	WG		1
23027	23027-1014	BODY-COMP-TAIL LAMP	UK		1
23027A	23027-1015	BODY-COMP-TAIL LAMP	WG		1
23036	23036-1034	BRACKET-TAIL LAMP			1
92022	92022-125	WASHER, 6.5X20X1.6			5
92027	92027-156	COLLAR, 6.8X10X14.5			3
92027A	92027-169	COLLAR, 6.8X10X16			2
92069	92069-063	BULB, 12V 21/5W			2
92075	35039-004	DAMPER, TAIL LAMP			1
92075A	92075-1092	DAMPER			2
92075B	92075-121	DAMPER, FENDER			3
92075C	92075-1282	DAMPER, TAIL LAMP			1
110	110B0622	BOLT, 6X22			2
110A	110B0625	BOLT, 6X25			2
110B	110B0630	BOLT, 6X30			1
220	220C0465A	SCREW-PAN-CROS, 4X65			2
311	311B0600	NUT-HEX, 6MM			1
461	461F0600	WASHER-SPRING, 6MM			4

46. Turn Signal



Ref. No.	Part No.	Description	Spec Code	Quantity - Z750		
				'82		
				Y1		
11009	11009-1052	GASKET, SIGNAL LAMP		4		
23040	23040-1037	LAMP-SIGNAL		2		
23040A	23040-1038	LAMP-SIGNAL		2		
23048	23048-1022	LENS-SIGNAL LAMP, "045-7280"		2		
23048A	23048-1023	LENS-SIGNAL LAMP, "045-7282"		2		
23051	23051-1032	BRACKET-SIGNAL LAMP		2		
92015	92015-1172	NUT, FLANGED, 10MM		2		
92069		BULB, 12V 21W		4		
		(LOCAL PROCUREMENT ITEM)				
92075	23058-002	WASHER, PLANE, 4MM		8		
110	110N0630	BOLT, 6X30		4		
220	220E0412A	SCREW-PAN-CROSS, 4X12		8		
311	311B0600	NUT-HEX, 6MM		4		
411	411B0600	WASHER-PLANE, 6MM		8		
411A	411D1000	WASHER-PLANE, 10MM		2		
461	461F0600	WASHER-SPRING, 6MM		4		

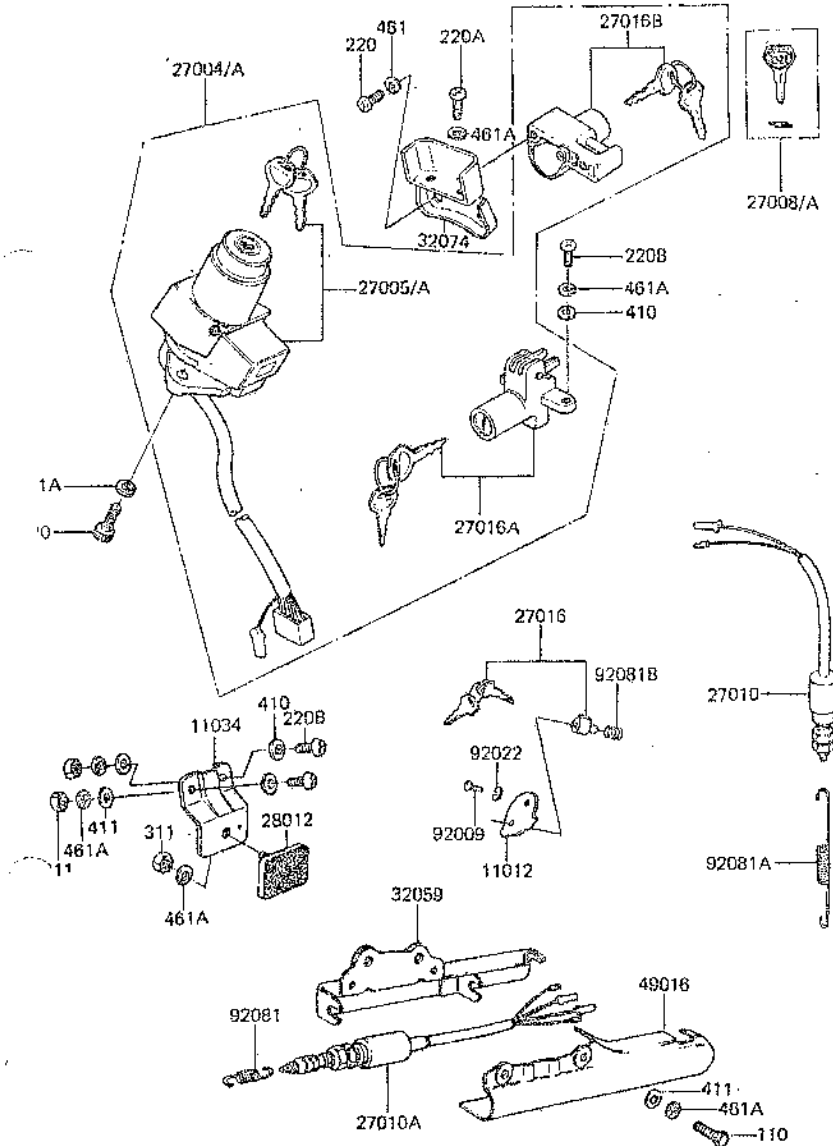
48. Ignition Switch, Lock



Ref. No.	Part No.	Description	Spec Code	Quantity	
				B2	Z7
11012	11012-1134	CAP, STEERING LOCK	WG	1	
11034	11034-1810	BRACKET, REFLECTOR, RR		1	
27004	27004-5149	SWITCH-ASSY	UK	1	
27004A	27004-5153	SWITCH-ASSY	WG	1	
27005	27005-5024	SWITCH-ASSY-IGNITION	UK	1	
27005A	27005-5026	SWITCH-ASSY-IGNITION	WG	1	
27008	27008-1015	KEY-LOCK, BLANK	UK	1	
(OPTION)					
27010	27010-015	SWITCH, BRAKE LAMP		1	
27010A	27010-1005	SWITCH, SIDE STAND		1	
27016		LOCK-ASSY, STEERING	WG	1	
(LOCAL PROCUREMENT ITEM)					
27016A	27016-5010	LOCK-ASSY, SEAT		1	
27016B	27016-5038	LOCK-ASSY, HELMET	WG	1	
			UK	2	
28012	28012-1002	REFLECTOR-REFLEX, RR		1	
32059	32059-1022	BRACKET-SWITCH		1	
32074	32074-1024	BRACKET-LOCK, HELMET LOCK		1	
49016	49016-1039	COVER-SEAL		1	
92009	92008-007	SCREW, 3.5MM	WG	1	
92022	92097-003	WASHER, WAVE	WG	1	
92081	27011-006	SPRING, BRAKE LAMP SWITCH		1	
92081A	27011-007	SPRING, BRAKE LAMP SWITCH		1	
92081B	27032-001	SPRING, STEERING LOCK	WG	1	
110	110B0614	BOLT, 6X14		2	
120	120A0616	BOLT-SOCKET, 6X16		2	
220	220B0508A	SCREW-PAN-CROS, 5X8		2	
220A	220B0612	SCREW-PAN-CROS, 6X12		2	
220B	220B0614	SCREW-PAN-CROS, 6X14		3	
311	311B0600	NUT-HEX, 6MM		3	
410	410B0600	WASHER-PLANE-SMALL, 6MM		3	

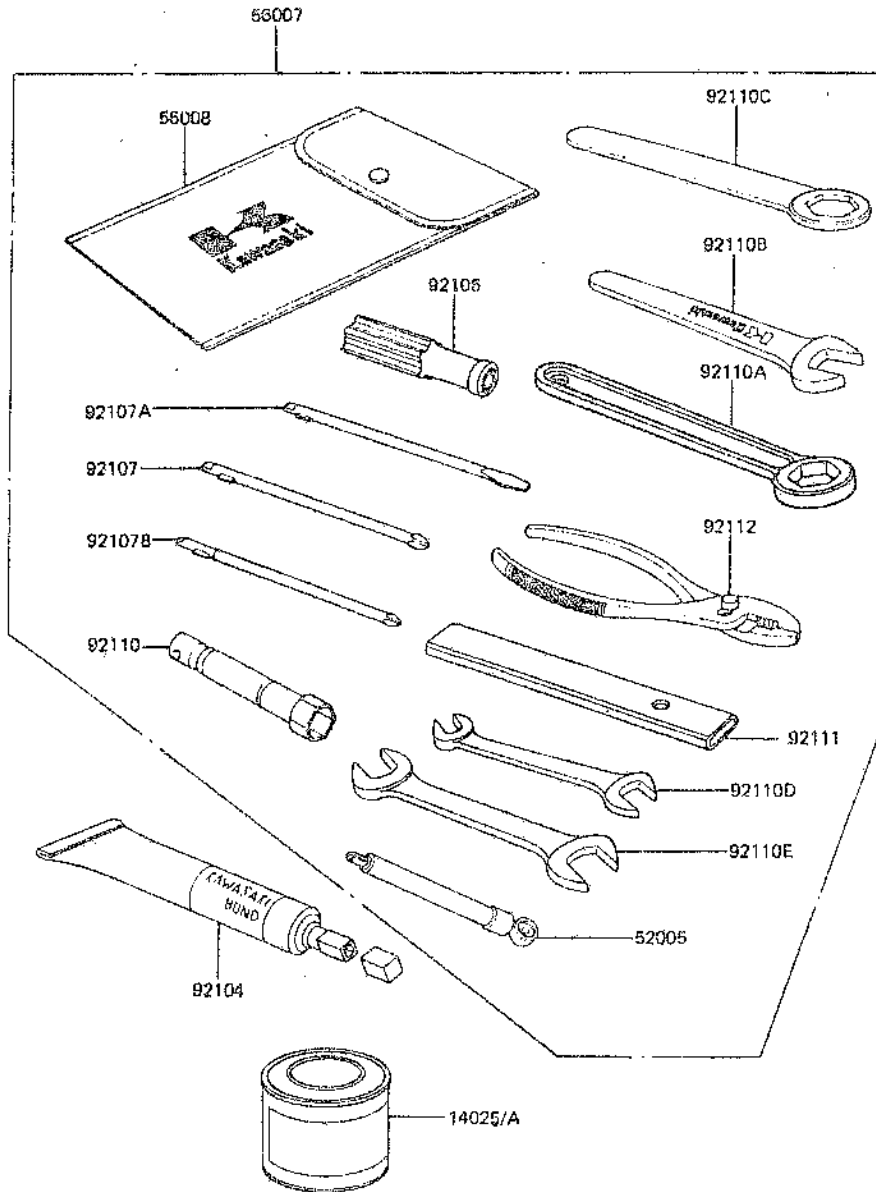
48-1. Ignition Switch, Lock

F2770-0120



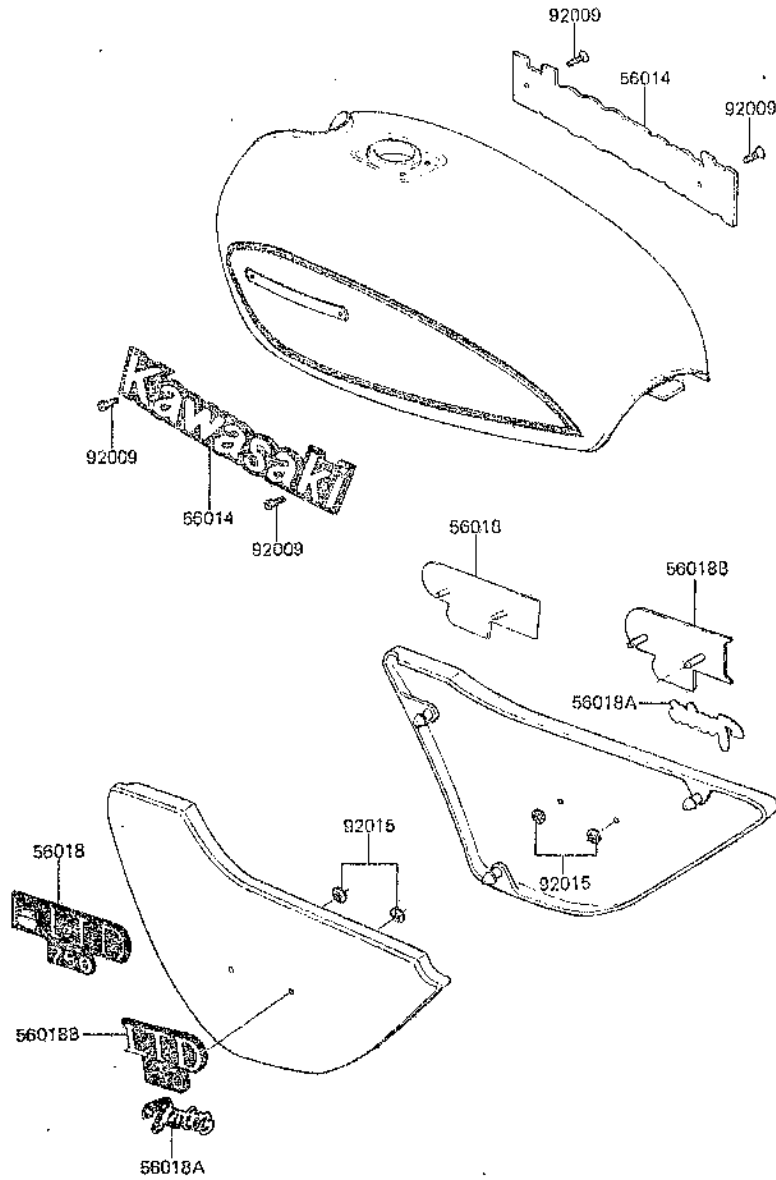
Ref. No.	Part No.	Description	Spec. Code	Quantity	
				82	75
411	411B0600	WASHER-PLANE,6MM		4	
461	461F0500	WASHER-SPRING,5MM		2	
461A	461F0600	WASHER-SPRING,6MM		10	

F2810-0037



Ref. No.	Part No.	Description	Spec Code	Quantity-	
				'82	'81
14025	56019-108-E2	PAINT, 1/12L, L.M. RED			1
14025A	56019-108-86	PAINT, 1/12L, EBONY			1
52005	52005-1020	GAUGE, AIR			1
56007	56007-1071	TOOLKIT			1
56008	56008-009	BAG, TOOL			1
92104	92104-002	GASKET-LIQUID, TUBE, 100G, SILVER			1
92106	92106-1001	GRIP-SCREW DRIVER			1
92107	92107-006	TOOL-DRIVER, #2PHILLIPS			1
92107A	92107-007	TOOL-DRIVER, #2SLOT			1
92107B	92107-008	TOOL-DRIVER, #3PHILLIPS			1
92110	92108-008	TOOL-WRENCH, BOX, 21MM			1
92110A	92109-009	TOOL-WRENCH, BOX END, 27MM			1
92110B	92110-1004	TOOL-WRENCH, OPEN END, 19MM			1
92110C	92110-1024	TOOL-WRENCH, BOX END, 22MM			1
92110D	92110-1038	TOOL-WRENCH, OPEN END, 10X12			1
92110E	92126-003	TOOL-WRENCH, OPEN END, 14X17			1
92111	92111-004	TOOL-BAR, BOX END WRENCH			1
92112	92112-003	TOOL-PLIERS			1

F2860-0120



Ref. No.	Part No.	Description	Spec Code	Quantity-	
				02	Z750
56014	56014-1043	EMBLEM, FUEL TANK			2
56018	56018-1239	MARK, SIDE COVER			2
56018A	56018-1257	MARK, SIDE COVER "TWIN"	WG		2
56018B	56018-1279	MARK, SIDE COVER		UK	2
92009	92012-005	SCREW-COUNTERSUNK, 3X6			4
92015	92018-005	NUT, PUSH, 3MM			4